



OPERATOR'S MANUAL

SVRXL

GRASS CATCHER

Model: GC-SVRXL



This manual contains the operating instructions and safety information for your Scag mower accessory. Reading this manual can provide you with assistance in maintenance and adjustment procedures to keep your mower accessory performing to maximum efficiency. The specific models that this book covers are listed on the inside cover. Before operating your machine, please read all the information enclosed.



WARNING

FAILURE TO FOLLOW SAFE OPERATING PRACTICES MAY RESULT IN SERIOUS INJURY OR DEATH.

- Read this manual completely as well as other manuals that came with your mower.
- DO NOT operate on steep slopes.
- Under no circumstances should the machine be operated on slopes greater than 20 degrees. ALWAYS FOLLOW OSHA APPROVED OPERATION.
- Stay two cut widths away from slopes, drop offs, ditches, water and retaining walls.
- DO NOT mow on wet grass. Wet grass reduces traction and steering control.
- Keep all shields in place, especially the grass discharge chute.
- Before performing any maintenance or service, stop the machine and remove the spark plug wire and ignition key.
- If a mechanism becomes clogged, stop the engine before cleaning.
- Keep hands, feet and clothing away from power-driven parts.
- Keep others off the mower (only one person at a time)

REMEMBER - YOUR MOWER IS ONLY AS SAFE AS THE OPERATOR!

HAZARD CONTROL AND ACCIDENT PREVENTION ARE DEPENDENT UPON THE AWARENESS, CONCERN, PRUDENCE, AND PROPER TRAINING OF THE PERSONNEL INVOLVED IN THE OPERATION, TRANSPORT, MAINTENANCE, AND STORAGE OF THE EQUIPMENT.

This manual covers the operating instructions and illustrated parts list for:

GC-SVRXL (901YW)

with a serial number of

Y1400001 to Y1499999

Always use the entire serial number listed on the serial number tag when referring to this product.

Table of Contents

SECTION 1 - GENERAL INFORMATION	1
1.1 INTRODUCTION	1
1.2 DIRECTION REFERENCE	1
1.3 SAFETY AND OPERATING INSTRUCTIONS	1
SECTION 2 - ASSEMBLY INSTRUCTIONS	3
2.1 ASSEMBLY INSTRUCTIONS - CUTTER DECK AND BLOWER COMPONENTS	3
2.2 ASSEMBLY INSTRUCTIONS - HOPPER COMPONENTS	6
2.3 ASSEMBLY INSTRUCTIONS - FRONT WEIGHT COMPONENTS - 52" ONLY	7
SECTION 3 - REMOVAL INSTRUCTIONS	8
3.1 GRASS CATCHER REMOVAL INSTRUCTIONS	8
SECTION 4 - MAINTENANCE	10
4.1 MAINTENANCE CHART - RECOMMENDED SERVICE INTERVALS.....	10
SECTION 5 - ILLUSTRATED PARTS LIST	11
GC-SVRXL BLOWER HOUSING ASSEMBLY SVRXL-52"	13
GC-SVRXL BLOWER HOUSING ASSEMBLY SVRXL-61" / SVRXL-72	15
GC-SVRXL BLOWER MOUNTING COMPONENTS	17
GC-SVRXL HOOD COMPONENTS.....	19
GC-SVRXL BAG SUPPORT COMPONENTS.....	21
GC-SVRXL SUPPORT FRAME COMPONENTS	23
GC-SVRXL FRONT WEIGHT COMPONENTS - 52V	25
GC-SVRXL DECALS.....	27
LIMITED WARRANTY- COMMERCIAL ACCESSORY	INSIDE BACK COVER

GENERAL INFORMATION

1.1 INTRODUCTION

This manual has been prepared to provide the information you need to correctly assemble, operate, and maintain this grass catcher. Read it carefully and keep it for future reference.

THE REPLACEMENT OF ANY PART ON THIS PRODUCT BY OTHER THAN THE MANUFACTURER'S AUTHORIZED REPLACEMENT PART MAY ADVERSELY AFFECT THE PERFORMANCE, DURABILITY OR SAFETY OF THIS PRODUCT.

USE OF OTHER THAN ORIGINAL SCAG REPLACEMENT PARTS WILL VOID THE WARRANTY.

If additional information or service is needed that is not outlined in this manual, please contact your Scag Power Equipment dealer. Scag dealers are trained in the latest service methods and carry a full line of Scag replacement parts.

When ordering parts, always provide the complete model number and serial number of your catcher.

All information provided in this manual is based upon information available at the time of printing. Scag Power Equipment reserves the right to make changes at any time without notice or obligation.

1.2 DIRECTION REFERENCE

The "Right" and "Left", "Front" and "Rear" of the machine are referenced from the operator's right and left when standing in the normal operating position and facing the forward travel direction.

1.3 SAFETY AND OPERATING INSTRUCTIONS

-NOTE -

To avoid personal injury, it is imperative that all safety instructions be observed.

1. Read this operator's manual and the operator's manual that is supplied with the machine this attachment is used on.

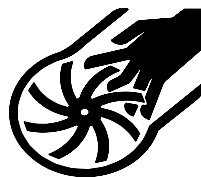
A replacement manual is available from your authorized Scag Service Dealer or by contacting: Scag Power Equipment, Service Department at P.O. Box 152, Mayville, WI 53050. You may also contact us through our website at www.scag.com. The manual for this grass catcher can be downloaded by using the model and serial number or use the contact form to make your request. Please indicate the complete model and serial number of your Scag product when requesting replacement manuals.

WARNING

Do not operate without discharge chute, mulch kit, operator controlled discharge chute (OCDC), or entire grass catcher installed.

2. Before removing the grass bags, disengage the mower, stop the engine and wait for all movement to stop.
3. **ALWAYS** turn the engine **OFF**, remove the key and wait for all movement to stop before servicing or cleaning the mower or the grass catcher.

DANGER



ROTATING BLOWER
BLADES

STOP ENGINE BEFORE
ENTERING CHUTE

CONTACT CAN INJURE

4. Do not modify or alter any component of the grass catcher attachment or mower.
5. Do not allow any passengers to ride on the grass catcher attachment or on the mower.

ASSEMBLY INSTRUCTIONS

2.1 ASSEMBLY INSTRUCTIONS - CUTTER DECK AND BLOWER COMPONENTS

- NOTE -

Use the illustrated parts list as a part number reference when following the assembly instructions.

-IMPORTANT-

When installing this grass catcher on a machine, one of the following Installation Kits will be needed to complete the installation.

SVRXL-52V - Installation Kit p/n 901ZW
SVRXL-61V / 72V - Installation Kit p/n 902AW

1. Remove all packaging materials. Lay out the mounting hardware and the catcher assembly parts for easy access. Prepare the work area making sure that it is a clean and safe environment.

WARNING

Do not operate without discharge chute, mulch kit, operator controlled discharge chute (OCDC), or entire grass catcher installed.

2. Remove the discharge chute from the cutter deck. See Figure 2-2.

- NOTE -

Do not discard the discharge chute or mounting hardware. The discharge chute **MUST** be reinstalled any time the grass catcher has been removed from the machine.

3. Remove the right side belt cover to gain access to the spindle assembly. See Figure 2-2.

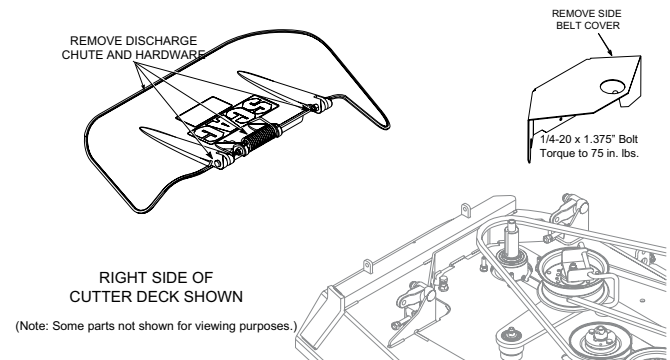


Figure 2-1. Discharge Chute Removal

- NOTE -

Retain the original belt cover. This cover **MUST** be reinstalled any time the complete catcher system is removed.

4. Remove the right side of deck belt, tapered hub, and pulley.
5. Install the pulley and the hub inverted, using 1/4-20 x 1.375" bolts (p/n 04001-109). See Figure 2-2. (The height alignment tools may "push out" as the pulley is tightened to the hub, this is normal)

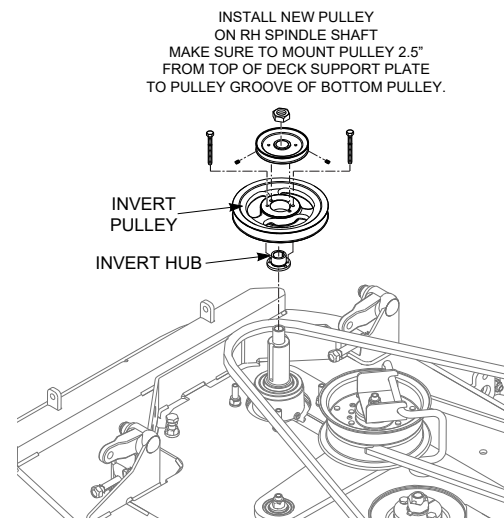


Figure 2-2. Pulley & Hub Installation

6. Make sure to mount the pulley 2.5" from the top of the deck support plate to the center of the groove of the bottom pulley (use the height alignment tools, included with this kit, for increased accuracy, p/n 429967, See Figure 2-3).

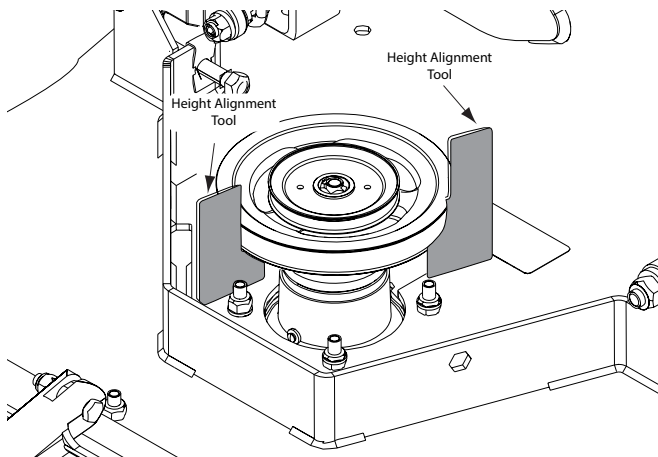


Figure 2-3. Height Alignment Tools

- Remove the turbo baffle from the cutter deck. Using 5/16-18 x 1" bolts (p/n 04001-09), 5/16 flatwasher (p/n 04040-15), and 5/16 elastic stop nuts (p/n 04021-10) install the catcher turbo baffle. See Figure 2-3. (baffles have p/n's on them)

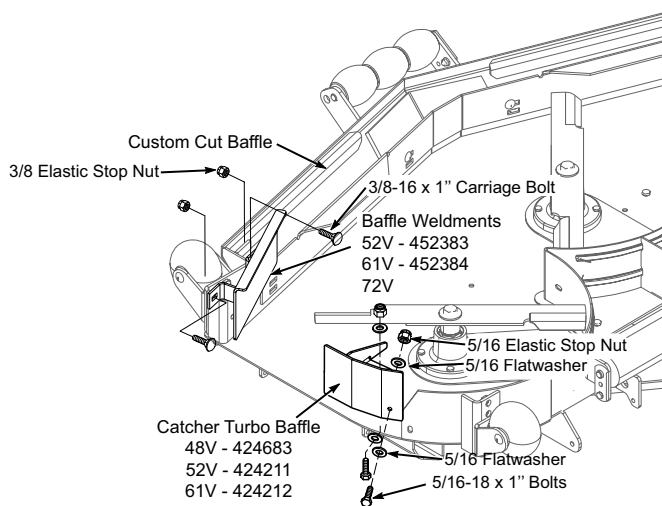


Figure 2-4. Grass Catcher Baffles

- NOTE -

Do not discard the original turbo baffle. This baffle may be reinstalled any time the grass catcher has been removed from the machine.

- Remove the hardware for the custom cut baffle from the mounting hole closest to the discharge opening.
- Install the grass catcher baffle weldment and secure using 3/8-16 x 1" carriage bolts (p/n 04003-23) and 3/8-16 elastic stop nuts (p/n 04021-09). See Figure 2-3.

-NOTE-

Adjust the "Custom-Cut" baffle installed in the cutter deck to the lowest position to enhance grass catcher performance.

- Bump mounting post (p/n 463627) to stiffener and clamp in place. Align edges. See Figure 2-5. Drill (.391 or 3/8" drill bit) holes and bolt in place.
- Install the blower mounting post to the deck using 3/8-16 x 1 1/4" bolts (p/n 04001-32), 3/8 flatwashers (p/n 04041-07), 3/8 lockwasher (p/n 04030-04), and 3/8-16 elastic stop nut (p/n 04021-09). Do not fully tighten the hardware at this time. See Figure 2-5 through Figure 2-7.

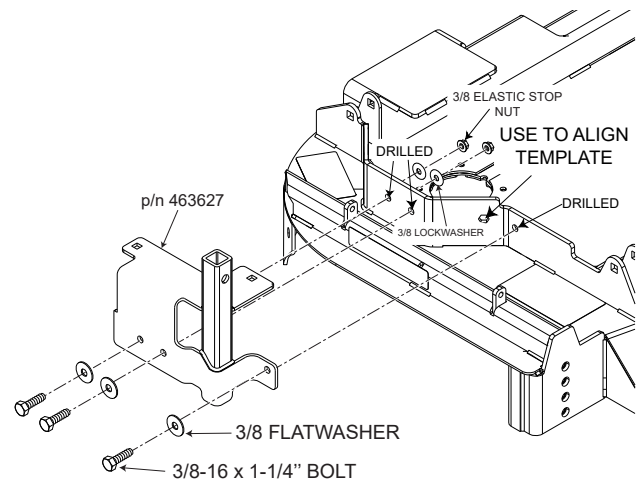


Figure 2-5. Blower Mounting Post Installation (52V)

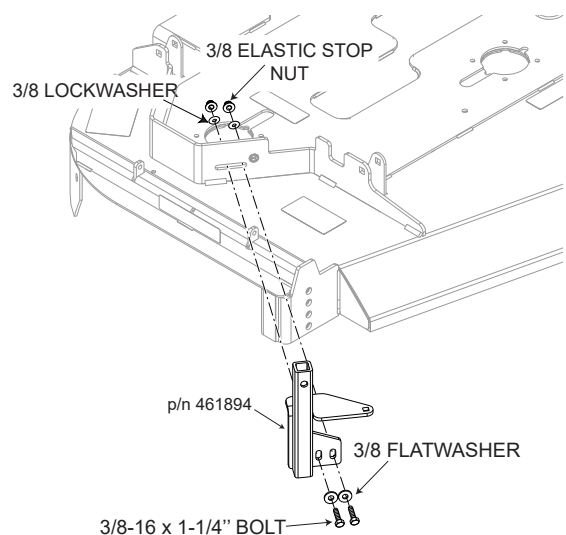


Figure 2-6. Blower Mounting Post Installation (61V)

Section 2

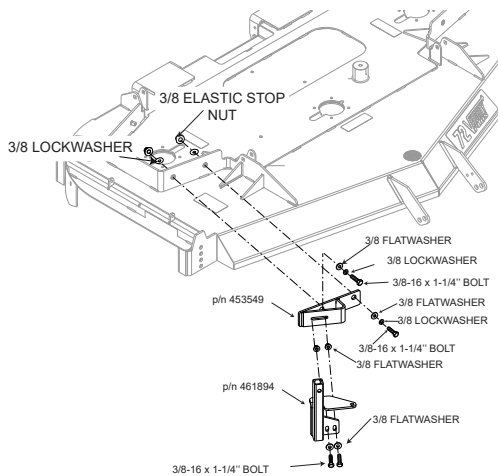


Figure 2-7. Blower Mounting Post Installation (72V)

12. Install the blower assembly to the mounting bracket and secure with the mounting pin. See Figure 2-8.
13. Align the blower assembly with the discharge opening of the cutter deck. Tighten the hardware for the mounting bracket. See Figure 2-8.
14. Install the quick pin through the hole in the front discharge chute mounting bracket. See Figure 2-8.

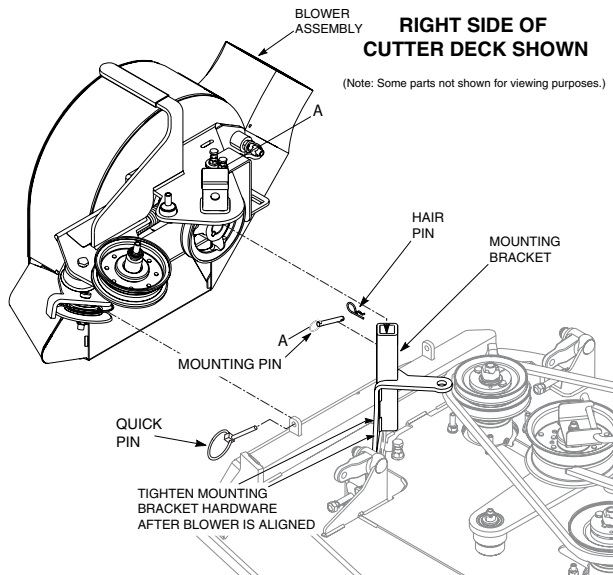


Figure 2-8. Blower Installation

15. Install the belt to the spindle pulley. When replacing the belt. See Figure 2-9 for belt routing.

-NOTE-

May need to loosen the rear belt cover guard to route belt around the blower pulley.

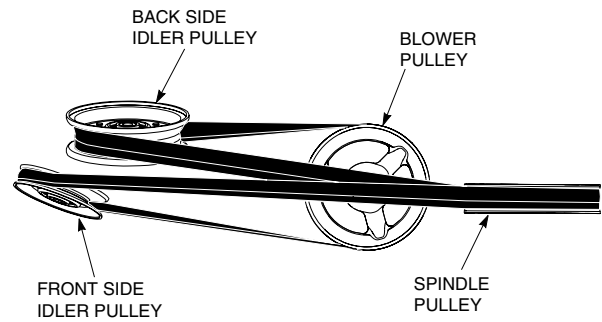


Figure 2-9. Belt Routing

16. Install the new belt covers supplied and secure. See pages 10-13 of the illustrated parts section provided in this manual for proper installation.

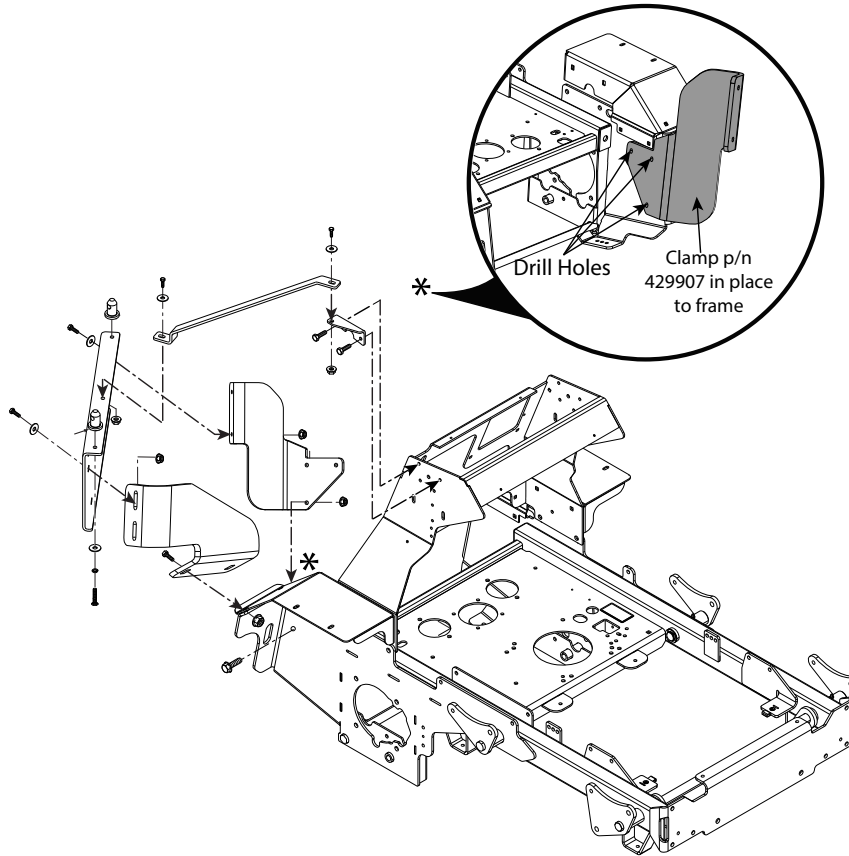


Figure 2-10. Hopper Assembly

2.2 ASSEMBLY INSTRUCTIONS - HOPPER COMPONENTS

1. Aligning the mounting bracket with the fender, clamp the LH mounting bracket (p/n 429907) to the frame as shown in Figure 2-10*.
1. Using the LH mounting bracket as a template, drill holes in frame using a 25/64th drill bit.
2. With help from an assistant, install the grass catcher mounting weldment assembly. See Figure 2-10.
3. Install the mounting pins on to the rear of the machine as shown. Secure using the hardware provided. See Figure 2-11. Note pin alignment in Figure 2-11 and Figure 2-12. This will allow for proper snap pin installation.

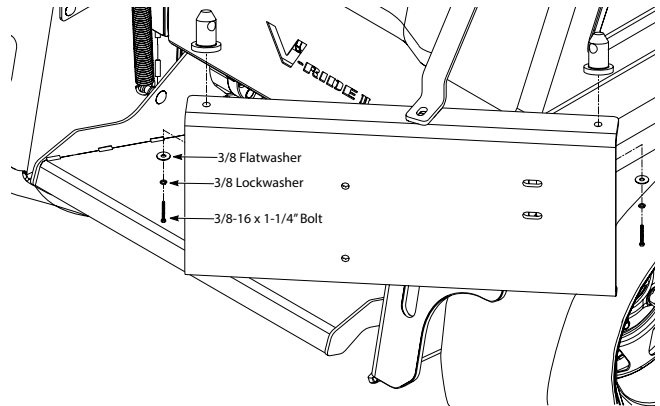


Figure 2-11. Hopper Mounting Hardware Install

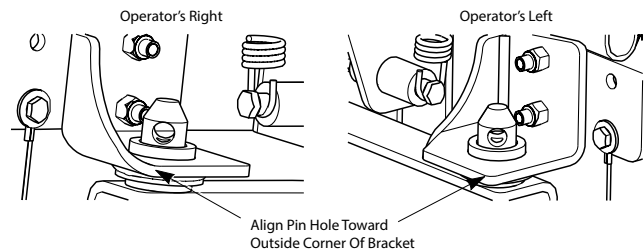


Figure 2-12. Pin Alignment

Section 2

- With help from an assistant, install the hopper assembly to the machine and secure with the ring pins. See Figure 2-13.

-NOTE-

The model shown in Figure 2-13 is for reference only. The grass catcher installs to all models in a similar fashion.

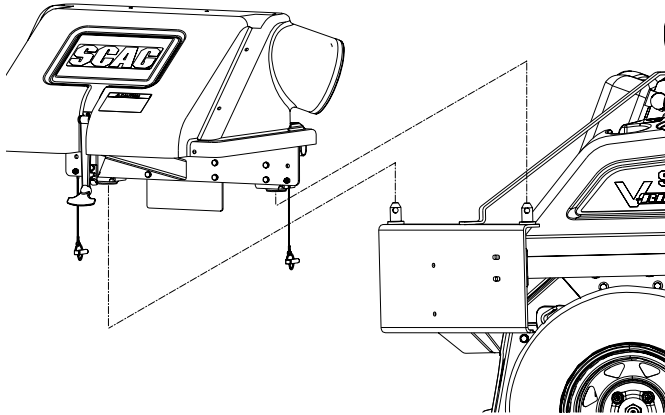


Figure 2-13. Hopper Installation

- Install hose adapter (p/n 461723) to the blower assembly and secure with the strap.

-NOTE-

When installing this catcher the discharge hose may need to be shortened. Follow the steps below when required.

- Lower the cutter deck on the machine to the lowest cutting height.
- If required, shorten the hose assembly before securing it to the hood assembly. Route the hose up to the hood assembly and mark the hose length required which will not allow the hose to "sag" or "droop".
- Cut the hose to the required length, if needed.
- Install the hose from the blower assembly to the hopper hood. Secure using the 6" clamps.
- Install the bag assemblies.

2.3 ASSEMBLY INSTRUCTIONS - FRONT WEIGHT COMPONENTS - 52" ONLY

- Assemble the front weight bar as shown in Figure 2-17.

- Using the weight support bar as a guide, identify the corresponding mounting holes used to secure the weight support bar to the front of the machine as shown in Figures 2-17.

For the 52" SVRXL models, existing hardware will need to be removed in order to secure the weight support bar to the front of the machine.

- Install the weight onto the weight bar. Slide the weight to the operator's far left side of the machine, secure using the pin (p/n 485172) in the hole to the inside of the weight. See Page 21 for the correct number of weights required.
- Check all hardware for tightness.
- Operate and test.

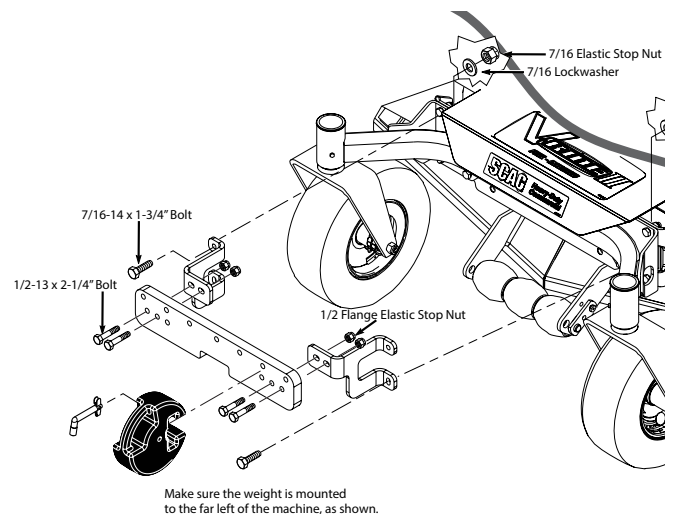


Figure 2-14. Front Weight Bar Installation (52" Only)

REMOVAL INSTRUCTIONS

3.1 GRASS CATCHER REMOVAL INSTRUCTIONS

Prepare the machine so there is easy and safe access to the work area. Park the machine on a flat, level surface and apply the parking brake. Remove the ignition key and disconnect the positive and negative cables from the battery. Maintain all safety related work procedures. Always wear hand and eye protection.

- NOTE -

For best overall performance and dispersal of grass clippings while side discharging, the grass catcher discharge baffle should be removed and the original turbo baffle should be reinstalled.

1. Remove the rubber strap holding the adapter to the blower assembly and the large quick pin securing the blower to the discharge mounting bracket. See Figure 3-1.
2. Remove the belt, pin, hair pin and large quick pin securing the blower assembly to the cutter deck and remove the blower assembly. See Figure 3-1.

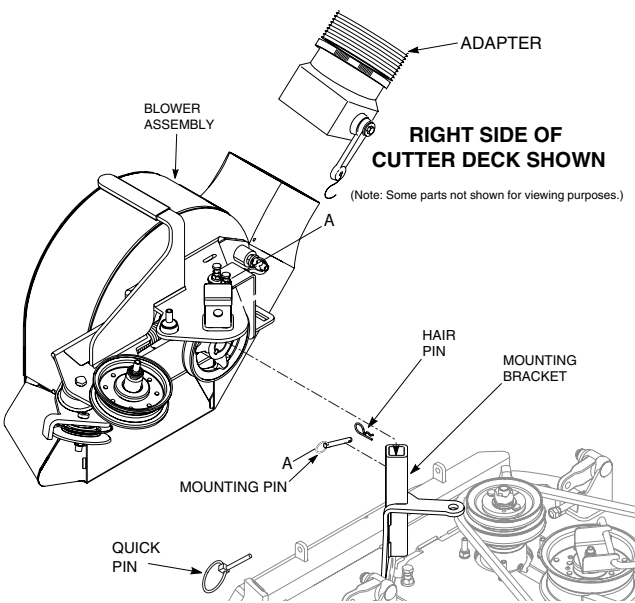


Figure 3-1. Removing the Blower Assembly

3. Remove the ring pins securing the hopper assembly to the rear of the machine.
4. With help from an assistant, remove the hopper assembly.

WARNING

Do not operate without discharge chute, mulch kit, operator controlled discharge chute (OCDC), or entire grass catcher installed.

5. Re-install the side discharge chute to the opening on the cutter deck. Replace the two (2) outside mounting bolts on the discharge chute with the clevis pins (p/n 04064-15) and rue cotter pins (p/n 04069-03). See Figure 3-2.
6. Re-install the cutter deck belt cover.
7. Remove the weights from the weight bar.

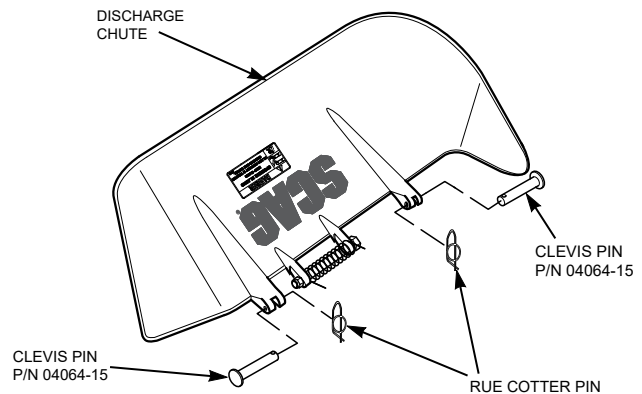


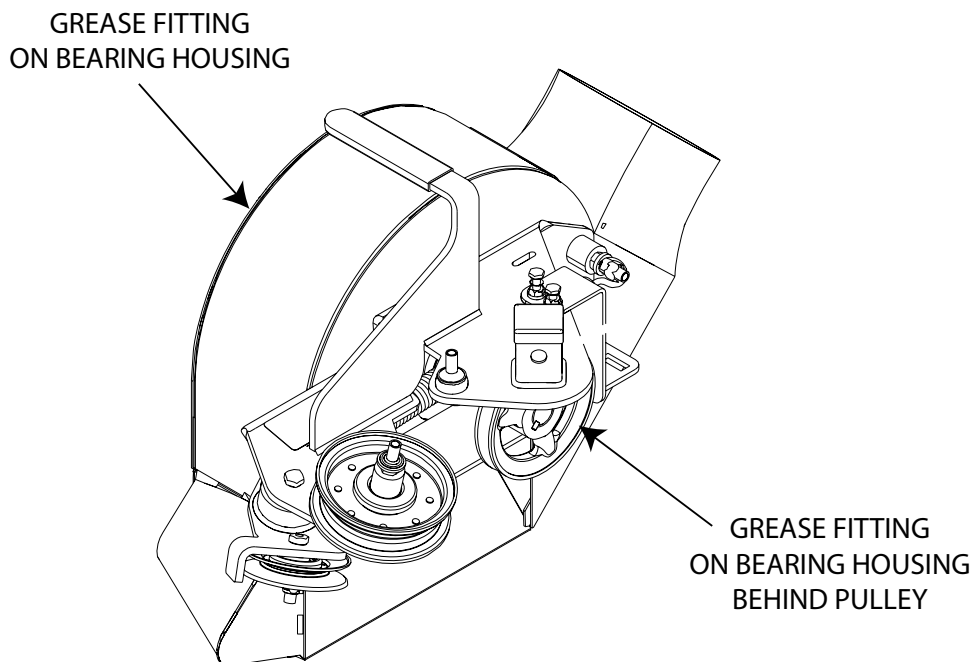
Figure 3-2. Reinstalling the Discharge Chute

MAINTENANCE

4.1 MAINTENANCE CHART - RECOMMENDED SERVICE INTERVALS

Break-In (First 10)	HOURS						Procedure	Comments
	8	20	40	100	200	500		
X							Check all hardware for tightness	
X							Inspect hose and adapter	
X							Check belt for proper alignment	
X							Inspect fabric bags	
	X						*Check screen in hopper	Remove debris from screen
	X						inspect hose and adapter	
	X						Inspect fabric bags	
	X						Check condition of blower	
	X						*Apply grease to blower bearings	See Figure Below
		X					Check belt for proper alignment	

**Perform these maintenance procedures more frequently under extremely dusty or dirty conditions.*

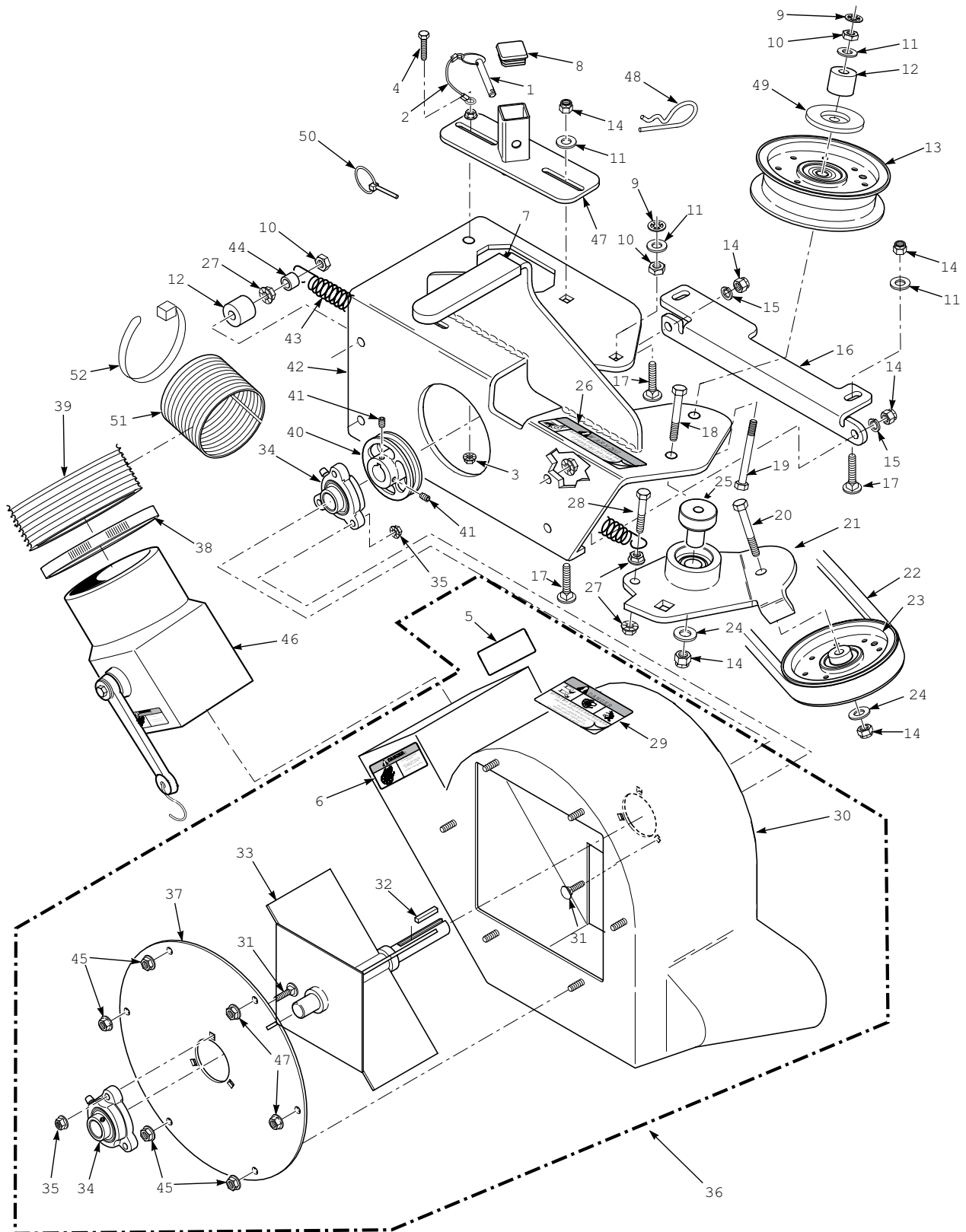


ILLUSTRATED PARTS LIST

GC-SVRXL BLOWER HOUSING ASSEMBLY SVRXL-52"

Ref. No.	Part No.	Description
1	04067-10	Pin, Ring 2-1/4" Long
2	481547	Lanyard, Deck Height Pin
3	04021-05	Nut, Serr. Flange 1/4-20
4	04001-21	Bolt, Hex Head 1/4-20 x 1-1/4"
5	487210	Decal, Blower
6	487211	Decal, Rotating Blower
7	481428	Grip, Blower Lever
8	483223	Cap, Square
9	04024-02	Nut, Push On 3/8 Thread
10	04021-05	Lock Nut, 3/8-16
11	04041-07	Flatwasher, 3/8-.391 x .938 x .105
12	43277	Spacer
13	483173	Pulley, Idler 3-1/2" Dia.
14	04021-09	Nut, Elastic Stop 3/8-16
15	04030-04	Lockwasher, 3/8-16
16	424361	Plate, Catcher Mounting
17	04001-20	Bolt, Carr. 3/8-16 x 1-1/2"
18	04001-54	Bolt, Hex Head 3/8-16 x 3" - 52"
19	04001-81	Bolt, Hex Head 3/8-16 x 3-1/2"
20	04001-21	Bolt, Hex Head 3/8-16 x 1-3/4"
21	451820	Idler Arm Weldment
22	483327	Belt, GC-SCZ-48V / STCII-48V
23	483189	Pulley, 3-1/2" O.D., GC-STC
24	04043-04	Washer, 3/8 Hardened
25	43576	Pivot, Idler
26	487212	Decal, Belt Cover
27	04019-04	Nut, Serr. Flange 3/8-16
28	04001-136	Bolt, Hex Head 3/8-16 x 1-1/2 Gr. 8
29	487209	Decal, Danger
30	451797	Blower Housing Weldment
31	04003-04	Bolt, Carr. 5/16-18 x 3/4" Gr. 5
32	04063-06	Key, 1/4 x 1/4 x 1-1/2"
33	451683	Fan Weldment
34	483034	Bearing Assembly
35	04019-03	Nut, Elastic Stop 5/16-18
36	494341	Blower Housing Assembly, GC-STT
37	421319	Cover, Blower Housing
38	48136-02	Clamp, 8-5/8" Max Dia.
39	462536	Hose, 8.00" Dia. x 53" Long (incl. #51, 52)
40	482298	Pulley, 4-3/4" O.D. - 1" Bore
41	04012-04	Set Screw, 5/16-18 x 3/8"
42	451800	Frame, Blower Mount
43	481522	Spring, Main Drive
44	43212	Spacer
45	04019-03	Nut, Serr. Flange 5/16-18
46	461723	Adapter w/Strap
47	451822	Receiver Weldment, Mounting Post
48	04062-04	Hair Pin Cotter, .177 x 3-1/4"
49	424367	Dust Shield
50	04066-04	Quick Pin, 5/16" Dia.
51	48135-16	Hose, 8" Dia. x 24" Split
52	48028-11	Cable Tie, .345 X 31.5 Black

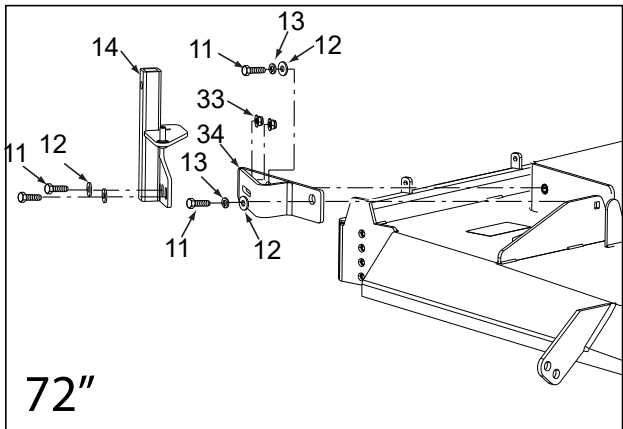
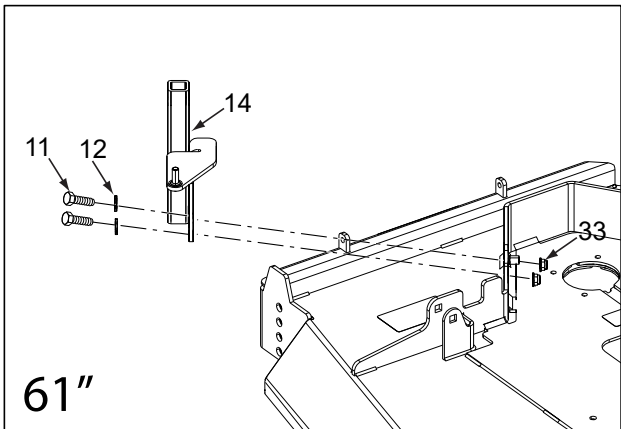
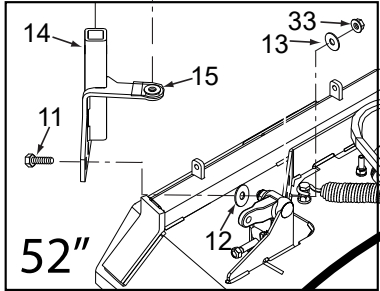
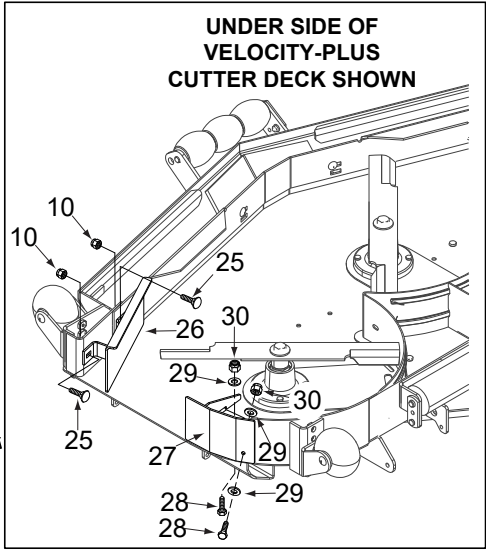
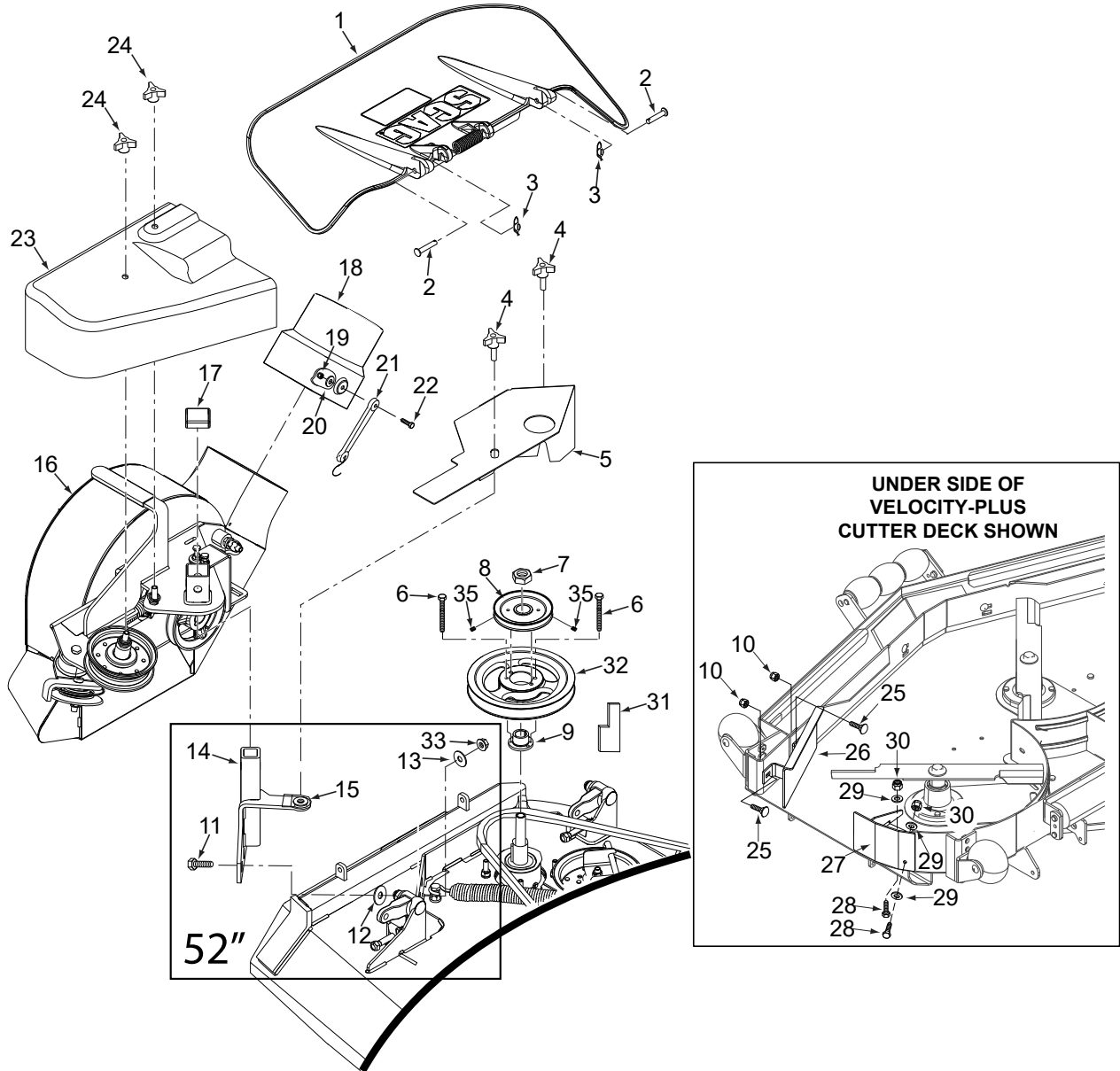
GC-SVRXL BLOWER HOUSING ASSEMBLY SVRXL-61" / SVRXL-72



GC-SVRXL BLOWER HOUSING ASSEMBLY SVRXL-61" / SVRXL-72

Ref. No.	Part No.	Description
1	04067-10	Pin, Ring 2-1/4" Long
2	481547	Lanyard, Deck Height Pin
3	04021-05	Nut, Serr. Flange 3/8-16
4	04001-21	Bolt, Hex Head 3/8-16 UNC X 1.75
5	487210	Decal, Blower
6	487211	Decal, Rotating Blower
7	481428	Grip, Blower Lever
8	483223	Cap, Square
9	04024-02	Nut, Push On 3/8 Thread
10	04021-05	Lock Nut, 3/8-16
11	04041-07	Flatwasher, 3/8-.391 x .938 x .105
12	43277	Spacer
13	483209	Pulley, Idler 4" Dia.
14	04021-09	Nut, Elastic Stop 3/8-16
15	04030-04	Lockwasher, 3/8-16
16	424361	Plate, Catcher Mounting
17	04003-05	Bolt, Carr. 3/8-16 x 1-1/2"
18	04001-46	Bolt, Hex Head 3/8-16 UNC X 2.25
19	04001-81	Bolt, Hex Head 3/8-16 x 3-1/2"
20	04001-21	Bolt, Hex Head 3/8-16 x 1-3/4"
21	491069	Idler Arm Assembly
22	488164	Belt, GC-SVRXL 72
	483182	Belt, GC-SVRXL 61
23	483189	Pulley, 3-1/2" O.D., GC-STC
24	04043-04	Washer, 3/8 Hardened
25	43575	Pivot, Idler
26	487212	Decal, Belt Cover
27	04019-04	Nut, Serr. Flange 3/8-16
28	04001-136	Bolt, Hex Head 3/8-16 x 1-1/2 Gr. 8
29	487209	Decal, Danger
30	451797	Blower Housing Weldment
31	04003-12	Bolt, Carr. 5/16-18 x 3/4" Gr. 5
32	04063-06	Key, 1/4 x 1/4 x 1-1/2"
33	451683	Fan Weldment
34	483036	Bearing Assembly
35	04021-10	Nut, Elastic Stop 5/16-18
36	491063	Blower Housing Assembly, GC-61V
37	421319	Cover, Blower Housing
38	48136-02	Clamp, 8-5/8" Max Dia.
39	462536	Hose, 8.00" Dia. x 53" Long (incl. #51, 52)
40	482298	Pulley, 4-3/4" O.D. - 1" Bore
41	04012-04	Set Screw, 5/16-18 x 3/8"
42	429965	Frame, Blower Mount
43	481522	Spring, Main Drive
44	43212	Spacer
45	04019-03	Nut, Serr. Flange 5/16-18
46	461723	Adapter w/Strap
47	451821	Receiver Weldment, Mounting Post
48	04062-04	Hair Pin Cotter, .177 x 3-1/4"
49	424367	Dust Shield
50	04066-04	Quick Pin, 5/16" Dia.
51	48135-60	Hose, 8" Dia. x 24" Split
52	48028-11	Cable Tie, .345 X 31.5 Black

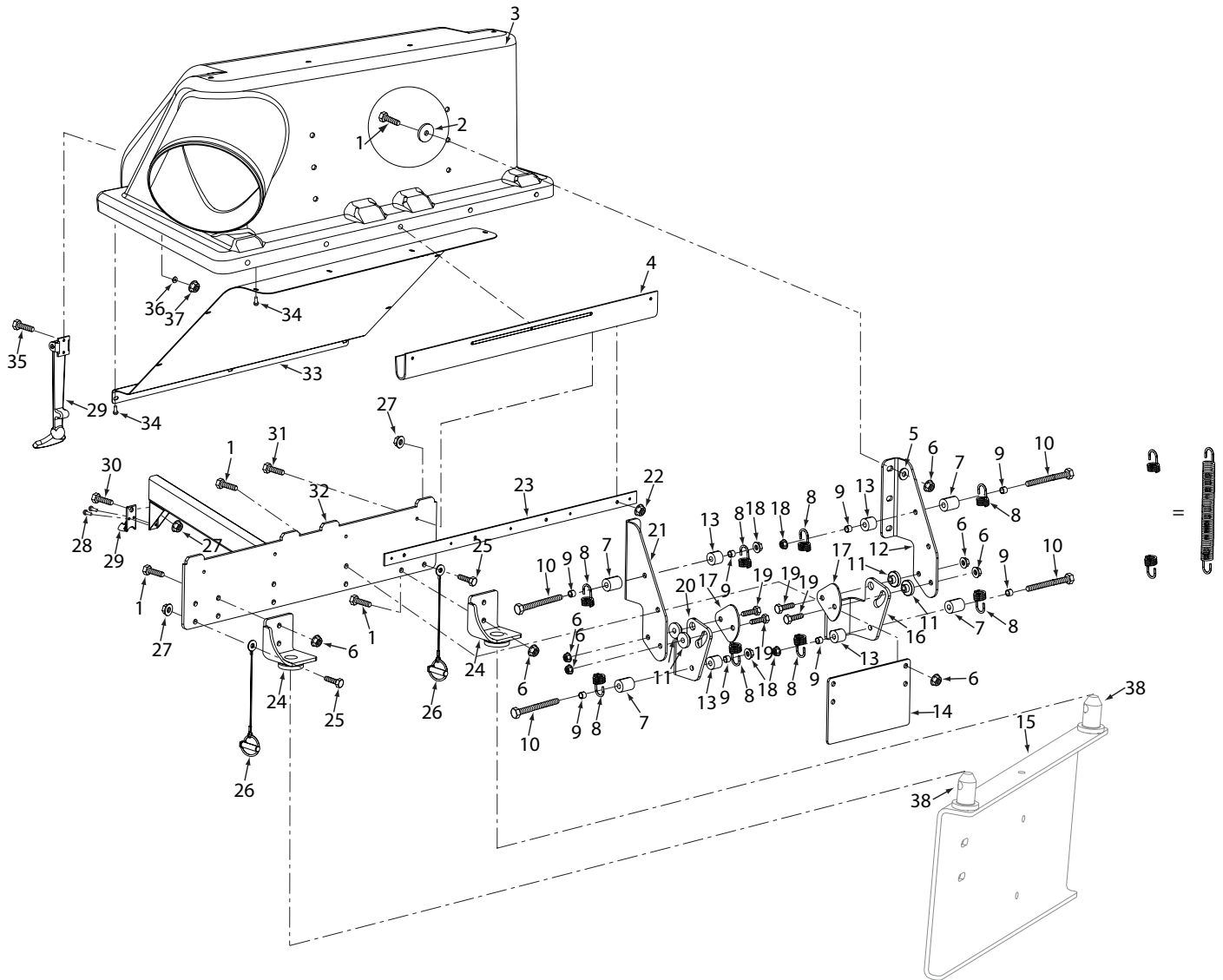
GC-SVRXL BLOWER MOUNTING COMPONENTS



GC-SVRXL BLOWER MOUNTING COMPONENTS

Ref. No.	Part No.	Description
1	461845	Discharge Chute Assy. - 52V
	461846	Discharge Chute Assy. - 61V
	462132	Discharge Chute Assy. - 72V
2	04064-15	Clevis Pin, 5/16 x 1½"
3	04069-03	Pin, Rue Cotter, 5/16 DIA
4	481625-01	Knob With Stud, 3/8-16 x 1¼"
5	429949	Belt Cover, 52GC-SVRXL
	429965	Belt Cover, 61GC-SVRXL
	429931	Belt Cover, 72GC-SVRXL
6	04001-225	Bolt, 1/4-20 x 2½" Full Thread
7	04020-09	Hex Nut 5/8-11
8	482587	Pulley, 4.00 DIA 1.125 Bore
9	483189	Pulley, 3.5 DIA V-Idler
10	04021-09	Nut, Lock, Elastic Stop, 3/8-16
11	04001-32	Bolt, 3/8-16 x 1¼"
12	04041-07	Washer, Flat, 3/8, .391 x .938 x .105
13	04030-04	Washer, Lock, 3/8 Spring
14	463627	Mounting Post Assembly, Blower - 52GC
	461894	Mounting Post Assembly, Blower - 61GC
15	04024-02	Nut, Push-On 3/8"
16	494341	Blower Assembly, 52GC-SVRXL
	491063	Blower Assembly, 61 / 72GC-SVRXL
17	483223	Cap, Square Vinyl
18	461723	Adapter w/strap Assembly (INCL.19,20,21,22)
	483032	Adapter, Blower - GC
19	04001-59	Washer, Flat, 1/4, .312 x .750 x .065
20	04040-14	Washer, Flat, 1/4, .312 x .750 x .065
21	48137-04	Nut, Lock, Elastic Stop, 1/4-20
22	04001-59	Washer, Flat, 1/4-20 UNC X 1.25
23	487942	Belt Cover, 52GC
	486350	Belt Cover, 61GC / 72GC
24	04029-04	Wingnut, 3/8 Plastic - Small
25	04003-23	Bolt, Carriage, 3/8-16 x 1"
26	453056	Baffle Weldment, GC-48/52V Blower
	453057	Baffle Weldment, GC-61V Blower
27	424211	Turbo Baffle, Catcher - 52V
	424212	Turbo Baffle, Catcher - 61V
	461894	Turbo Baffle, Catcher - 72V
28	04001-09	Bolt, 5/16-18 x 1"
29	04040-15	Washer, Flat, 5/16, .375 x .875 x .083
30	04021-10	Nut, Lock, Elastic Stop, 5/16-18
31	429967	Pulley Height Tool
32	482587	Pulley, 4.00" Dia. - 52V
	482377	Pulley, 5.45" Dia - 61V
	482830	Pulley, 6.25" Dia - 72V
33	04117-02	Nut, Lock, Elastic Stop With Flange, 3/8-16
34	453549	Mounting Post Attachment, 72V
35	04012-04	Setscrew, 5/16-18 x 3/8"
	429966	Link, Decklift - 52V

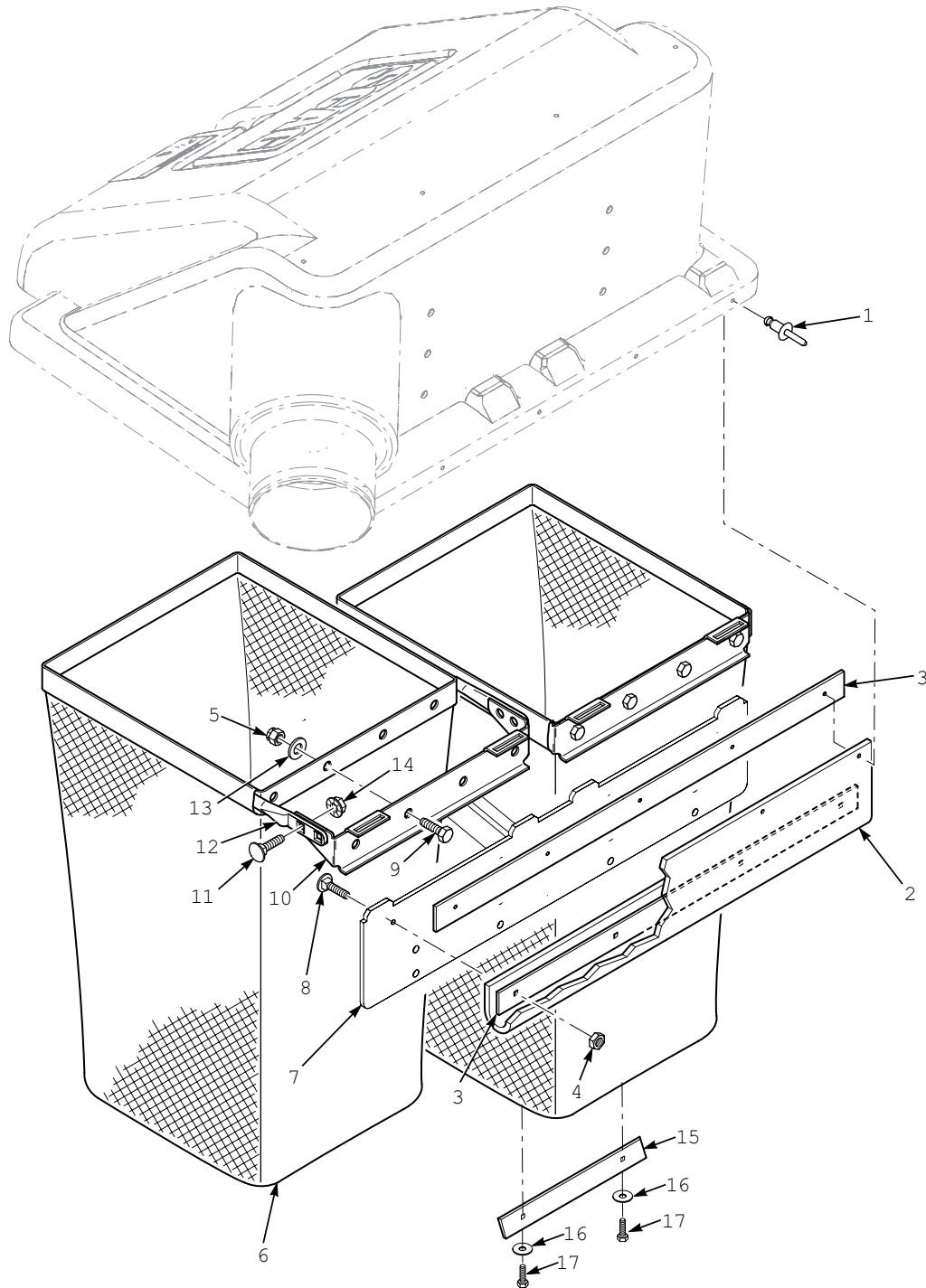
GC-SVRXL HOOD COMPONENTS



GC-SVRXL HOOD COMPONENTS

Ref. No.	Part No.	Description
1	04001-32	Bolt, 3/8-16 x 1¼"
2	04041-11	Washer, Flat 3/8, .406 x 1.5 x .1793
3	462782	Hood Assembly, Catcher With Decal (INCL. 485465, 487110, 4,23,33,34,36)
4	483589	Hood, Seal
5	04041-07	Washer, Flat, 3/8, .391 x .938 x .1046
6	04021-09	Nut, Lock, Elastic Stop, 3/8-16
7	43886	Spacer, GC Hitch
8	482304	Spring, Hood Hinge
9	43212	Sleeve, Hydro Linkage
10	04001-30	Bolt, 3/8-16 x 4"
11	43546	Bushing, Hopper Pivot
12	425830	Hinge, Upper-LH
13	43886	Spacer, J Pull Rod
14	427840	Plate, Support
15	427790	Bag Support Plate
16	425875	Hinge, Lower-LH
17	425832	Guard, GC Hinge
18	04021-05	Nut, Lock, Center Lock, 3/8-16
19	04001-20	Bolt, 3/8-16 x 1½"
20	425876	Hinge, Lower-RH
21	425831	Hinge, Upper-RH
22	04021-02	Nut, Lock, Center Lock, 1/4-20
23	424753	Retainer, Seal
24	453016	Receiver, Weldment
25	04001-09	Bolt, 5/16-18 x 1"
26	483596	Quick Pin Assembly, With Lanyard
27	04021-10	Nut, Lock, Elastic Stop, 5/16-18
28	04090-03	Pop Rivet, 3/16 x .402
29	482409	Draw Latch (Hook and Strap)
30	04001-08	Bolt, 5/16-18 x 3/4"
31	04001-01	Bolt, 1/4-20 x 3/4"
32	452675	Frame Weldment, Bag Support
33	424731	Screen, GC Hood
34	04090-02	Pop Rivet, 3/16 x .652
35	04010-25	Machine Screws, #10-32 x 3/4"
36	04041-19	Washer, Flat, 3/16, .196 x .469 x .0478
37	04021-01	Nut, Lock, Elastic Stop, #10-32
38	43884	Pin, GC Locator
39	04030-04	Washer, Lock, 3/8 Spring

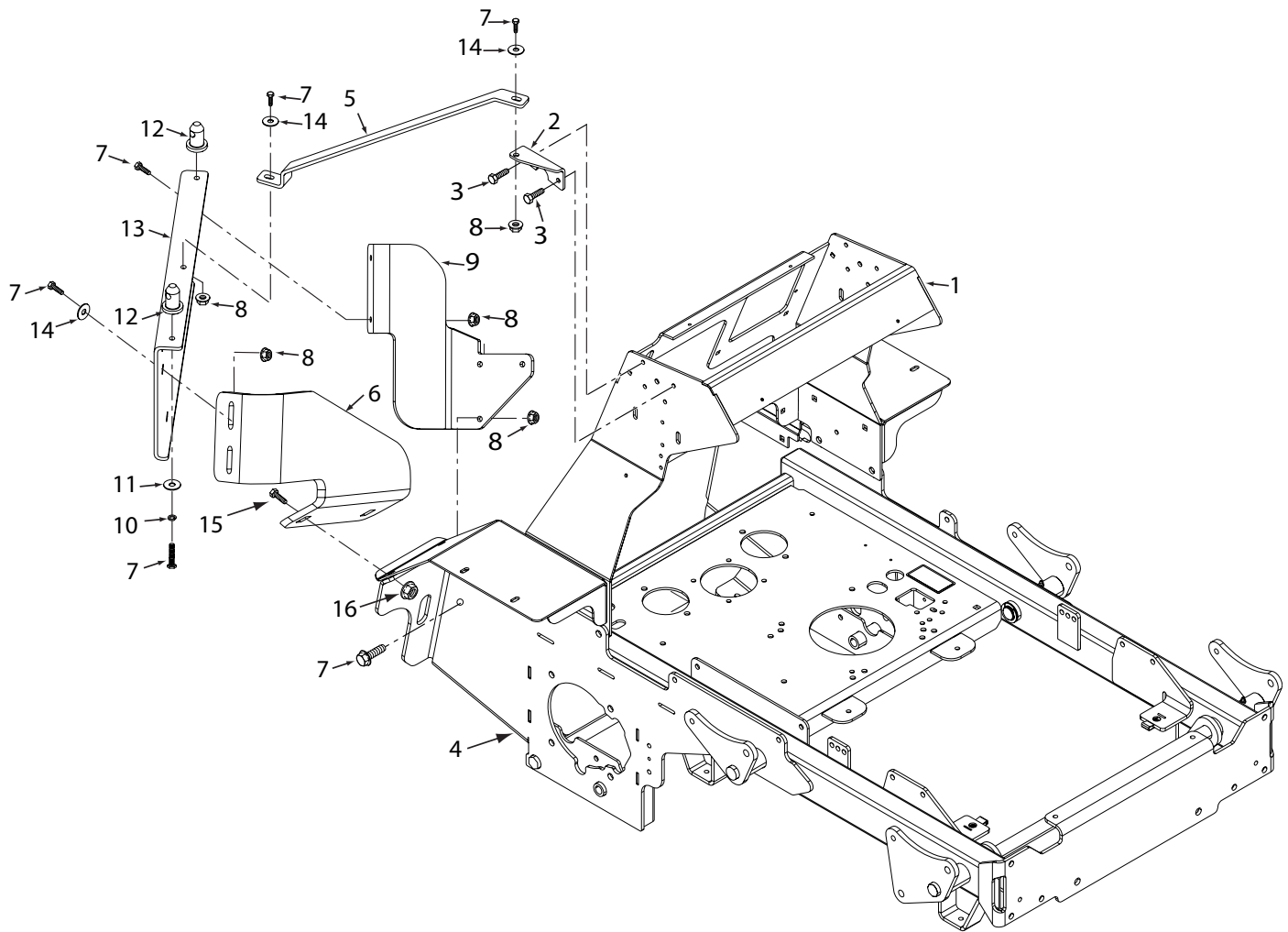
GC-SVRXL BAG SUPPORT COMPONENTS



GC-SVRXL BAG SUPPORT COMPONENTS

Ref. No.	Part No.	Description
1	04090-02	Pop Rivet, 3/16 x .652
2	483589	Seal, GC Hood
3	424753	Retainer, Seal
4	04021-02	Nut, Center Lock 1/4-20
5	04021-10	Nut, Elastic Stop 5/16-18
6	462965	Bag Assembly
7	452675	Frame Weldment, Bag Support
8	04001-01	Bolt, 1/4-20 x 3/4"
9	04001-08	Bolt, 5/16-18 x 3/4"
10	423198	Mount, Bag Frame Tube
11	04003-12	Bolt, Carriage 5/16-18 x 3/4"
12	423197	Tube, Bag Support
13	04040-15	Flatwasher, 5/16-.375 x .875 x .083
14	04019-03	Nut, Serrated Flange 5/16-18
15	427476	Handle
16	04041-11	Washer, Flat, 3/8, .406 x 1.5 x .1793
17	04001-10	Bolt, 5/16-18 x 1 1/4"

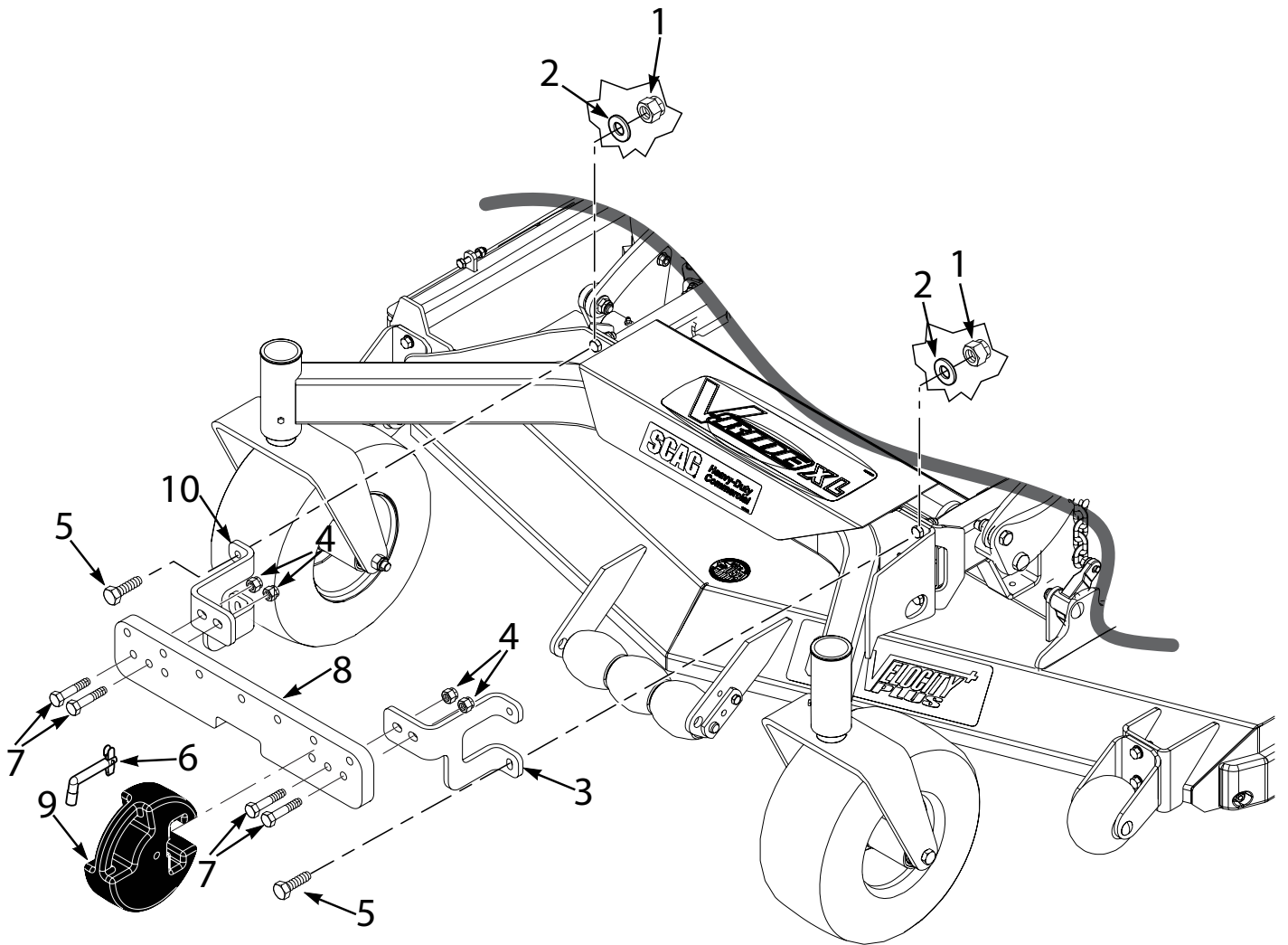
GC-SVRXL SUPPORT FRAME COMPONENTS



GC-SVRXL SUPPORT FRAME COMPONENTS

Ref. No.	Part No.	Description
1	453252	Handlebar WLMT SVRXL
2	427792	Mounting Bracket, Upper
3	04001-09	Bolt, 5/16-18 x 1"
4	463367	Mainframe Weldment, SVRXL
5	427791	Upper Support Bracket
6	429921	GC Mounting Bracket, RH
7	04001-32	Bolt, 3/8-16 x 1¼"
8	04117-02	Nut, Lock, Elastic Stop With Flange, 3/8-16
9	429907	GC Mounting Bracket, LH
10	04030-04	Washer, Lock, 3/8 Spring
11	04041-11	Washer, Flat, 3/8, .406 x 1.5 x .1793
12	43884	Pin, GC-SCZ Locator
13	427790	Bag Support, Plate
14	04041-07	Washer, Flat, 3/8, .391 x .938 x .1046
15	04003-23	Carriage Bolt, 3/8" - 16 x 1.00"
16	04019-04	Nut, Serrated Flange, 7/16" - 14

GC-SVRXL FRONT WEIGHT COMPONENTS - 52V



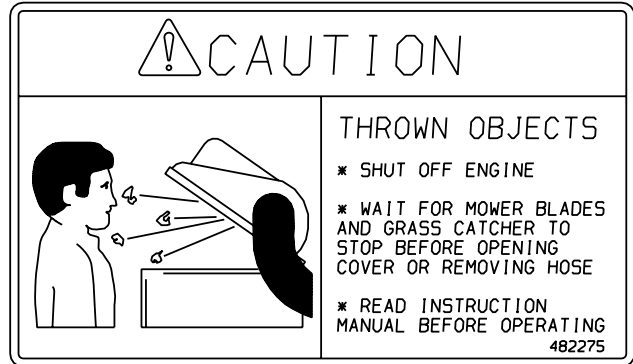
GC-SVRXL FRONT WEIGHT COMPONENTS - 52V

Ref. No.	Part No.	Description
1	04021-11	Nut, Lock, elastic Stop, 7/16-14
2	04030-05	Washer, Lock, 7/16 Spring
3	429902	Mounting Bracket, Weight Bar - LH
4	04117-04	Nut, Lock, elastic Stop With Flange, 1/2-13
5	04001-117	Bolt, 7/16-14 x 1 $\frac{3}{4}$ "
6	485172	Pin, Weight Retention
7	04001-153	Bolt, 1/2-13 x 2 $\frac{1}{4}$ "
8	426093	Weight Bar
9	484758	GC Weight
10	429903	Mounting Bracket, Weight Bar - RH

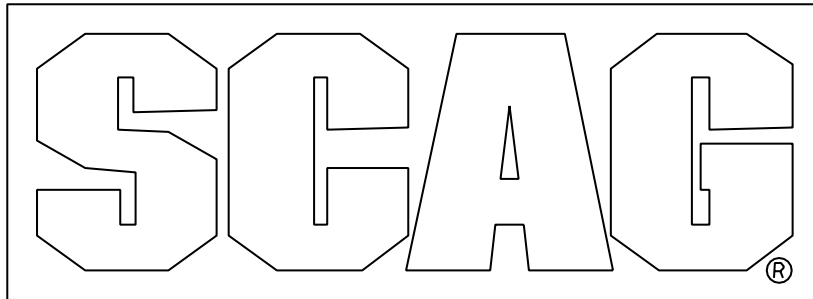
GC-SVRXL DECALS



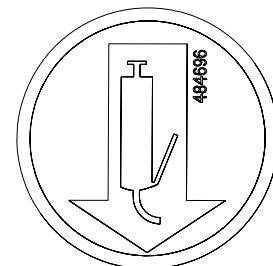
487212



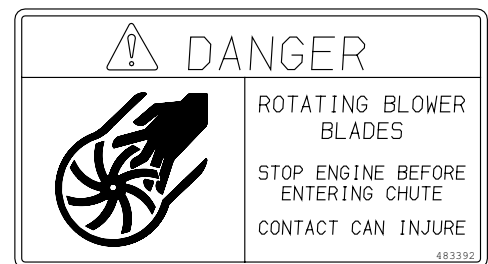
482275



482733



487213



487211

LIMITED WARRANTY- COMMERCIAL ACCESSORY

Any part of the Scag commercial accessory manufactured by Scag and found, in the reasonable judgment of Scag, to be defective in material or workmanship, will be repaired or replaced by an Authorized Scag Service Dealer without charge for parts and labor.

The Scag accessory, including any defective part, must be returned to an Authorized Scag Service Dealer within the warranty period. The expense of delivering the accessory to the dealer for warranty work and the expense of returning it back to the owner after repair or replacement will be paid for by the owner. Scag's responsibility in respect to claims is limited to making the required repairs or replacements, and no claim of breach of warranty shall be cause for cancellation or rescission of the contract of sale of any Scag machine. Proof of purchase will be required by the dealer to substantiate any warranty claim. All warranty work must be performed by an Authorized Scag Service Dealer.

This warranty is limited to 90 days from the date of original retail purchase for any Scag accessory that is used for commercial purposes, or any other income-producing purpose including rental use.

The warranty for the grass catcher blower assemblies (excluding the belt) is limited to 1-year from the date of original retail purchase. 90 Days for rental use.

This warranty does not cover any accessory that has been subject to misuse, neglect, negligence, or accident, or that has been operated in any way contrary to the operating instructions as specified in the Operator's Manual. The warranty does not apply to any damage to the accessory that is the result of improper maintenance, or to any accessory or parts that have not been assembled or installed as specified in the Operator's Manual.

The warranty does not cover any accessory that has been altered or modified. In addition, the warranty does not extend to repairs made necessary by normal wear, or by the use of parts or accessories which, in the reasonable judgment of Scag, are either incompatible with the Scag mower or adversely affect its operation, performance or durability. This warranty does not cover engines and electric starters, which are warranted separately by their manufacturer.

Scag Power Equipment reserves the right to change or improve the design of any accessory without assuming any obligation to modify any accessory previously manufactured.

All other implied warranties are limited in duration to the 90 day warranty period. Accordingly, any such implied warranties including merchantability, fitness for a particular purpose, or otherwise, are disclaimed in their entirety after the expiration of the appropriate ninety day warranty period. Scag's obligation under this warranty is strictly and exclusively limited to the repair or replacement of defective parts and Scag does not assume or authorize anyone to assume for them any other obligation. Some states do not allow limitations on how long an implied warranty lasts, so the above limitation may not apply to you.

Scag assumes no responsibility for incidental, consequential or other damages including, but not limited to, expense for gasoline, oil, expense of delivering the machine to an Authorized Scag Service Dealer and expense of returning it back to the owner, mechanic's travel time, telephone or telegram charges, rental of a like product during the time warranty repairs are being performed, travel, loss or damage to personal property, loss of revenue, loss of use of the mower, loss of time, or inconvenience. Some states do not allow the exclusion or limitation of incidental or consequential damages, so the above limitation or exclusion may not apply to you.

This warranty gives you specific legal rights, and you may also have other rights which vary from state to state.