

SCAG

POWER EQUIPMENT



KEY IDENTIFYING FEATURES

ALL UNITS LISTED

5 GALLON PLASTIC FUEL TANKS
18 X 8.5 WHEELS & TIRE
820 SERIES TRANSAXLE WITH 1" AXLE SHAFT
INTERNAL WIRE HARNESS GROUND
BLADE-TYPE FUSES
TAPERED BEARING SPINDLE ASSEMBLIES

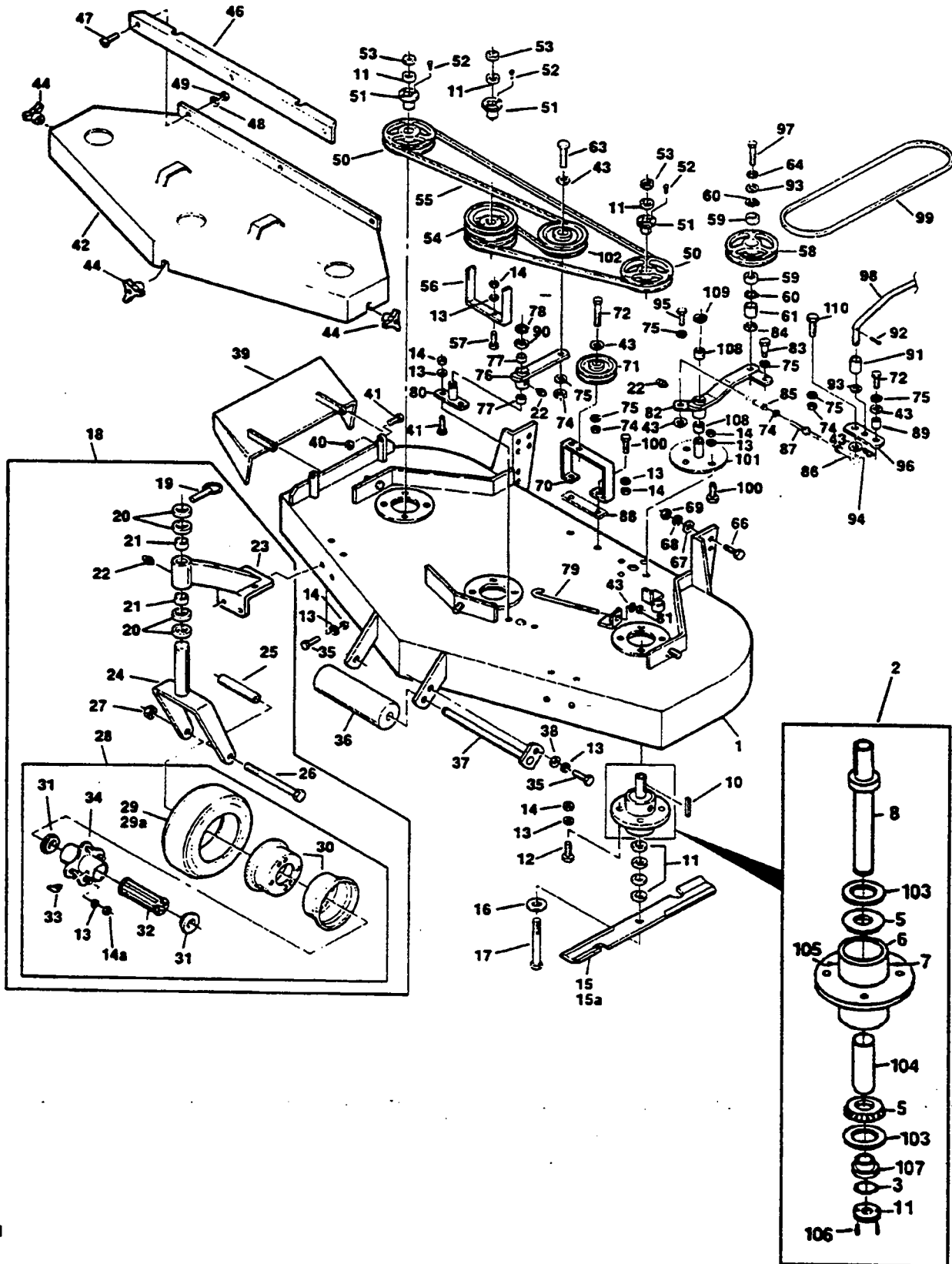
MODEL#

STG-18KH

SM-61

STH

SM-61 CUTTER DECK

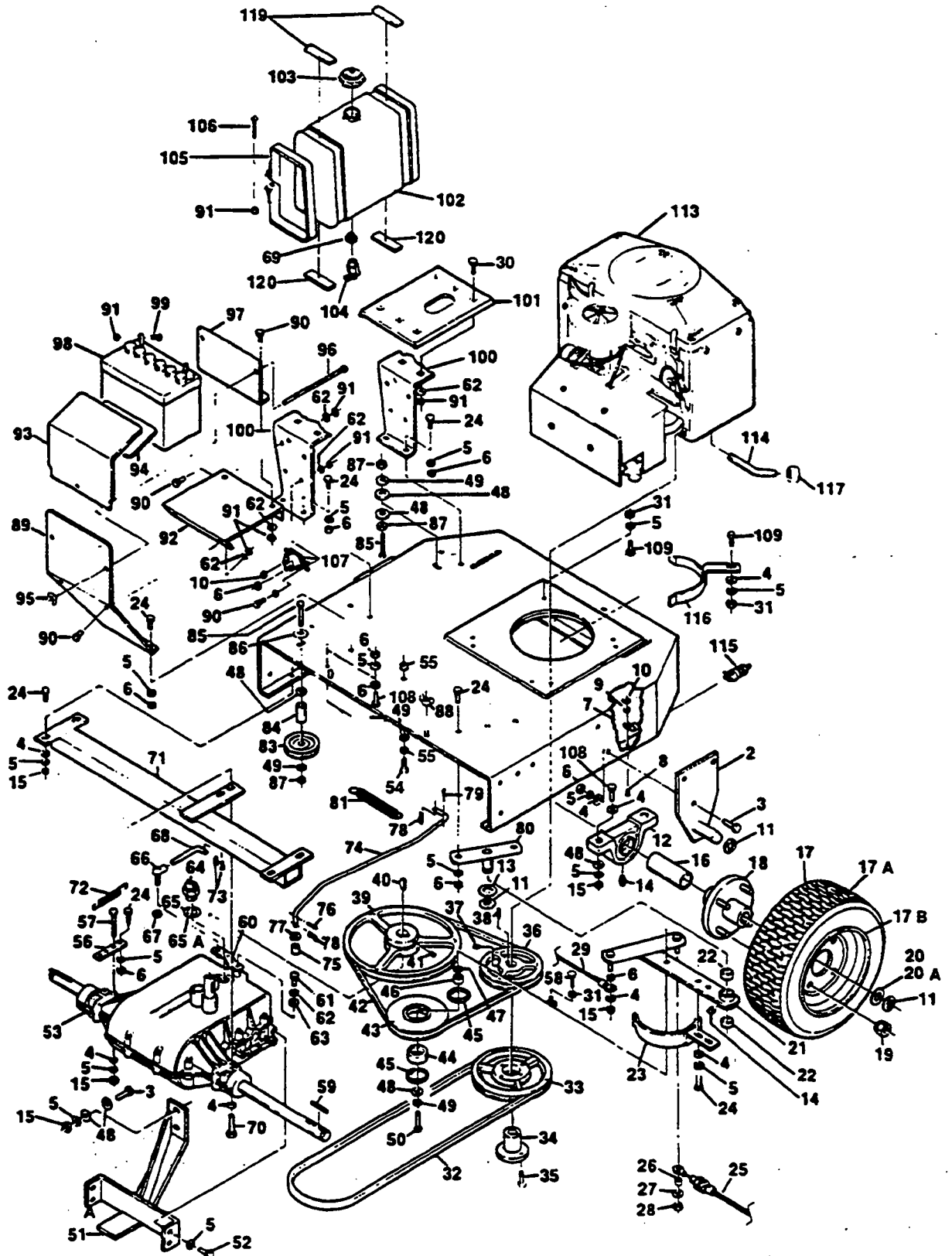


SM-61 CUTTER DECK

Ref. Part No. No.	Description	Ref. Part No. No.	Description		
1	46245	Cutter Deck (incl. Decal)	54	48128	Pulley, Double (includes 51-52)
2	46400	Spindle Assembly, Tapered Bearing	55	48607	Belt, Blade Drive
3	04050-04	Retaining Ring, 1" Ext.-Inverted	56	42063	Belt Guide
4	04050-07	Retaining Ring, 2-7/16" Int.-Basic	57	"	Bolt, Hex Hd., 5/16-18 x 1-1/2"
5	48668	Tapered Bearing	58	48062	Pulley Idler
6	41007	Spindle Housing, Tapered Bearing	59	48102	Bearing
7	48114-02	Grease Fitting, Str. 5/16 Serrated	60	04050-06	Retaining Ring, 1-9/16" Int. Basic
8	45391	Spindle Shaft, Tapered Bearing	61	43045	Sleeve, Idler Bearing
9	04041-02	Washer, 1-5/16 x 2-7/16 x 16 ga.	62	43040	Spacer, Idler Bearing
10	04063-08	Key, 1/4 x 1/4 x 2"	63	"	Bolt, Hex Hd., 3/8-16 x 2-3/4"
11	43201	Spacer, Cutter Blade	64	"	Lockwasher, Spring 1/2"
12	"	Bolt, Hex Hd., 5/16-18 x 1-1/4"	66	"	Bolt, Hex Hd., 1/2-13 x 1-1/4"
13	"	Lockwasher, Spring, 5/16"	66	"	Bolt, Hex Hd., 1/2-13 x 1-1/2"
14	"	Hex Nut, 5/16-18	67	"	Flat Washer, 1/2"
14A	"	Hex Nut, 5/16-24	68	"	Lockwasher, 1/2"
15	48111	Cutter Blade, 21" Standard Lift	69	"	Hex Nut, 1/2-13, Elastic Stop
15A	48304	Cutter Blade, 21" High Lift	70	42536	Idler Pulley Support
16	04040-10	Flat Washer, 5/8W	71	48413	Pulley, Belt Guide
17	04001-41	Bolt, Hex Hd., 5/8-11 x 9-1/2"	72	"	Bolt, Hex Hd., 3/8-16 x 2"
18	46079	Caster Assy, Comp. (Incl. 19-28)	74	"	Hex Nut, 3/8-16
19	04066-01	Quick Pin	75	"	Lockwasher, Spring, 3/8"
20	43037-01	Spacer, Caster Yoke, 1/2" Long	76	46081	Idler Arm Assy. (incl. 22 & 77)
21	48100-01	Bronze Bearing	77	48100-05	Bronze Bearing
22	48114-04	Grease Fitting, Str. 1/4-28	78	04050-02	Retaining Ring, 3/4" Ext. "E"
23	45082	Support Assy. (Incl. 21-22)	79	43028	Rod, Idler Pull, J
24	45006	Caster Yoke	80	45037	Idler Pivot
25	43022	Sleeve, Caster Wheel Bearing	81	"	Hex Nut, 3/8-16 Elastic Stop
26	04001-37	Bolt, Hex Hd., 1/2-13 x 5-1/2"	82	46383	Idler Arm Assy. (incl. 22 & 77)
27	"	Hex Locknut, 1/2-13	83	43054	Shoulder Bolt
28	48307-01	Wheel Assy. (Incl. 13-14, 14a, 29-34)	84	43041	Spacer, Idler
29	48307-02	Tire Only, Caster Wheel	85	48544	Rod End, LH (gold colored)
29A	48006-03	Inner Tube Only, Caster Wheel	85	48464	Rod End, RH (silver colored)
30	48307-04	Rim Pair, Caster Wheel	87	48590	Link, Turnbuckle
31	48006-07	Retainer, Bearing, Caster Wheel	88	42917	Spacer Bar
32	48006-06	Roller Bearing, Caster Wheel	89	43042	Sleeve, Cam Clutch
33	48114-03	Grease Fitting, 45° 1/4-28	90	04041-08	Washer 3/4 (49/64 x 1-1/4 x 16 ga.)
34	48006-05	Hub Assy. w/Bolts	91	43043	Sleeve, Clutch Rod
35	"	Bolt, Hex Hd., 5/16-18 x 3/4"	92	"	Cotter Pin, 3/32 x 1"
36	48038	Guide Roller	93	"	Washer, 33/64 x 1 x 16 ga.
37	45046	Roller Shaft	94	04062-01	Hair Pin, Large
38	"	Washer, 3/8 x 7/8 x 13 ga.	95	"	Bolt, Hex Hd., 3/8-16 x 1"
39	45029	Discharge Chute	96	421107	Cam Link
40	"	Hex Nut, 5/16-18 Elastic Stop	97	"	Bolt, Hex Hd., 1/2-20 x 2"
41	"	Bolt, Hex Hd., 5/16-18 x 1"	98	44017	Rod, Blade Engage (approximately 27" long)
42	446151	Belt Cover (incl. Decals)	99	48063	Belt, Cutter Drive
43	"	Washer, 25/64 x 15/16 x 12 ga.	100	"	Bolt, Hex Head, 5/16-18 x 1"
44	04029-03	Wing Nut, 3/8-16	101	45329	Idler Pivot
45	43123	Spacer	102	48531	Pulley, Idler
46	42045	Belt Cover Skirt	103	48681	Seal, Tapered Bearing Spindle
47	"	Machine Screw, 1/4-20 x 1/2 Truss Head	104	43218	Sleeve, Tapered Bearing Spindle
48	"	Lockwasher, Spring, 1/4"	105	48677	Relief Fitting, Tapered Bearing Spindle
49	"	Hex Nut, 1/4-20	106	"	Roll Pin, 1/8 x 1/2"
50	48127	Pulley (Incl. 51-52)	107	43217	Bushing, Tapered Bearing Spindle
51	48141	Taper Hub	108	48100-02	Bronze Bearing
52	"	Bolt, Hex Hd., 1/4-20 x 3/4"	109	04050-05	Retaining Ring - Est. "E" - 1-1/8"
53	"	Hex Nut, 5/8-11	110	"	Hex Hd. Bolt, 3/8-16 x 1-1/2"

* Common hardware which should be purchased locally. All bolts Grade 5 plated, all other fasteners zinc plate.

ENGINE DECK

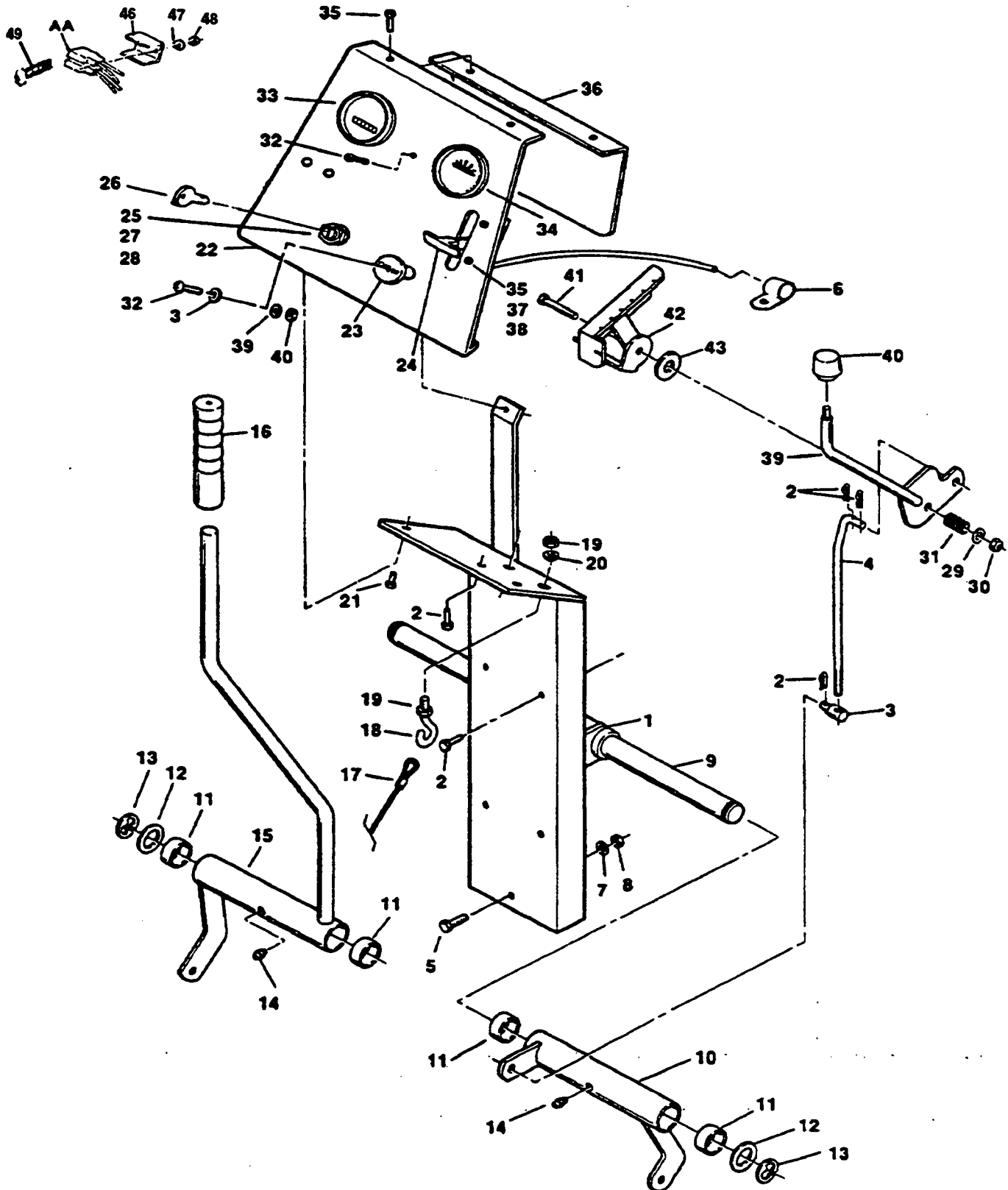


ENGINE DECK

Ref. Part No.	Part Number	Description	Ref. Part No.	Part Number	Description
1	45146	Engine Deck	60	42368	Shift Lever
2	45149	Hitch Bracket	61	04001-55	Hex Hd. Bolt, 1/4-28x3/4 Grd.8
3	.	Hex Head Bolt, 5/16-18 x 1"	62	.	Lockwasher, Spring, 1/4"
4	.	Washer, 11/32 x 11/16 x 16 ga.	63	04043-01	Washer, 17/64x7/8x1/8 H.T.
5	.	Lockwasher, Spring, 5/16"	64	48021	Neutral Safety Switch
6	.	Hex Nut, 5/16-18	65	48122-01	Fiber Washer, .010
7	48030-01	Clamp	65A	48122-02	Fiber Washer, .020
8	.	Prips. Wshr Hd. Screw #10-32 x 1/2"	66	48118	Ball Joint
9	.	Lockwasher, #10 Ext Tooth	67	04021-06	Hex Lock Nut, 3/8-24
10	.	Hex Nut, #10-32	68	44016	Shaft Connector Rod
11	04050-08	Retaining Ring, 1 Ext. "E"	69	48309	Bushing, Fuel Tank Valve
12	48104-02	Bearing, Pillow Block 1"	70	.	Hex Head Bolt, 5/16-18 x 3"
13	04041-08	Washer 49/64 x 1 1/4 x 16 ga.	71	45147	Transaxle Support
14	48114-01	Grease Fitting, Str., 1/4-28	72	48052	Spring, Brake Return
15	.	Hex Lock Nut, 5/16-18	73	04062-02	Hair Pin, Small
16	43107	Spacer - LH Axle	74	44017	Blade Clutch Rod
17	48321	Drive Wheel Assembly	75	43043	Sleeve
17A	48321-02	Tire, 18 x 5.50-8, 4-ply	76	.	Cotter Pin, 3/32 x 1"
17B	48321-04	Rim	77	.	Washer, 33/64 x 1 x 16 ga.
18	48321-05	Hub & Flange (Includes Bolts)	78	04062-01	Hair Pin, Large
19	48321-06	Bolt and Nut	79	.	Cotter Pin, 3/32 x 3/4"
20	04042-05	Washer, 1-1/16 x 1-3/4 x 12 ga.	80	45037	Pivot Base Wid.
20A	04041-14	Washer, 1-1/16 x 1-3/4 x 18 ga.	81	48051	Spring, Belt Clutch
21	46144	Idler Arm (Includes 14 & 22)	82	42060	Bracket, Spring Mounting
22	48100-05	Bronze Bearing	83	48066	Pulley, Brake Cable
23	45014	Belt Guide	84	43024	Spacer, Pulley
24	.	Hex Head Bolt, 5/16-18 x 3/4"	85	.	Hex Head Bolt, 3/8-16 x 3"
25	48241	Foot Cable Assembly	86	.	Washer, 13/32 x 1-1/2 x 7 ga.
26	43049	Sleeve, Foot Cable	87	.	Hex Nut, 3/8-16
27	.	Washer, 9/32 x 5/8 x 16 ga.	88	04029-03	Wing Nut, 3/8-16
28	.	Hex Lock Nut, 1/4-20	89	42187	Battery Mounting Bracket
29	48046	Brake Cable	90	.	Hex Head Bolt, 1/4-20 x 3/4"
30	.	Carrage Head Bolt, 1/4-20 x 3/4"	91	.	Hex Nut, 1/4-20
31	.	Hex Nut, 5/16-18, Elastic Stop	92	42188	Battery Shelf
32	48083	Belt, Blade Drive SM61	93	42024	Battery Cover
33	48168	Pulley, Mower Drive (Incl. 34 & 35)	94	48099	Battery Cover Pad
34	48168-03	Taper Hub	95	04029-01	Wing Nut, 1/4-20
35	.	Hex Head Bolt, 1/4-20 x 1-3/8"	96	04003-01	Carrage Bolt, 1/4-20 x 6"
36	48063	Pulley	97	42055	Battery Clamp
37	.	Setscrew, Hex Skt, 5/16-18 x 1-1/4"	98	48015	Battery
38	04063-03	Key, 1/4 x 1/4 x 2-1/2"	99	.	Hex Head Bolt, 1/4-20 x 1/2"
39	48322	Pulley, Transaxle	100	42370	Tank Mtg. Bracket (Vertical)
40	04063-09	Key, Hi Pro #9	101	42377	Support, Fuel Tank (Horizontal)
41	.	Setscrew, Hex Skt, 5/16-18 x 3/8"	102	46174	Fuel Tank (Incl. 103, 104, & 132)
42	48085	Belt, Transaxle Drive	103	48311	Fuel Tank Cap
43	48065	Pulley, Idler	104	48308	Fuel Shut-off Valve
44	48102	Bearing, Idler Pulley	105	42369	Fuel Tank Strap
45	04050-06	Retaining Ring, 1-9/16" Int. Basic	106	.	Screw, Slotted Rd Hd Mach, 1/4-20 x 2"
46	43044	Sleeve, Transmission Idler Bearing	107	48016	Solenoid
47	43039	Spacer, Transmission Idler	108	.	Hex Head Bolt, 5/16-18 x 1-1/2"
48	.	Washer, 25/64 x 15/16 x 12 ga.	109	.	Hex Head Bolt, 5/16-18 x 1-3/4"
49	.	Lockwasher, Spring, 3/8"	110	.	Hex Head Bolt, 5/16-18 x 2"
50	.	Hex Head Bolt, 3/8-16 x 1-1/2"	111	48059-01	Fuel Hose Clamp
51	45148	Transaxle Protector	112	48058-07	Fuel Hose
52	.	Hex Head Bolt, Tapite, 5/16-18 x 3/4"	113	48258	Engine, 18 HP Kohler
53	48310	Transaxle	114	48115	Oil Drain Extension
54	.	Hex Head Bolt, 3/8-16 x 5"	115	48019	Safety Switch, Blade Clutch
55	.	Hex Jam Nut, 3/8-16	116	45222	Belt Guide Weldment
56	42357	Spacer, Transaxle	117	.	Pipe Cap, 3/8 NPT
57	.	Hex Head Bolt, 5/16-18 x 3"	118	48255	Pipe Nipple w/Special Threads
58	.	Carrage Head Bolt, 5/16-18 x 1"	119	48292	Pad, Strap Cushion
59	04063-11	Key, 1/4 x 1/4 x 2-1/2" Plated	120	48205	Pad, Tank Support

AA - Fuse Holders
Part of Wiring Harness
See Page 20.

INSTRUMENT PANEL

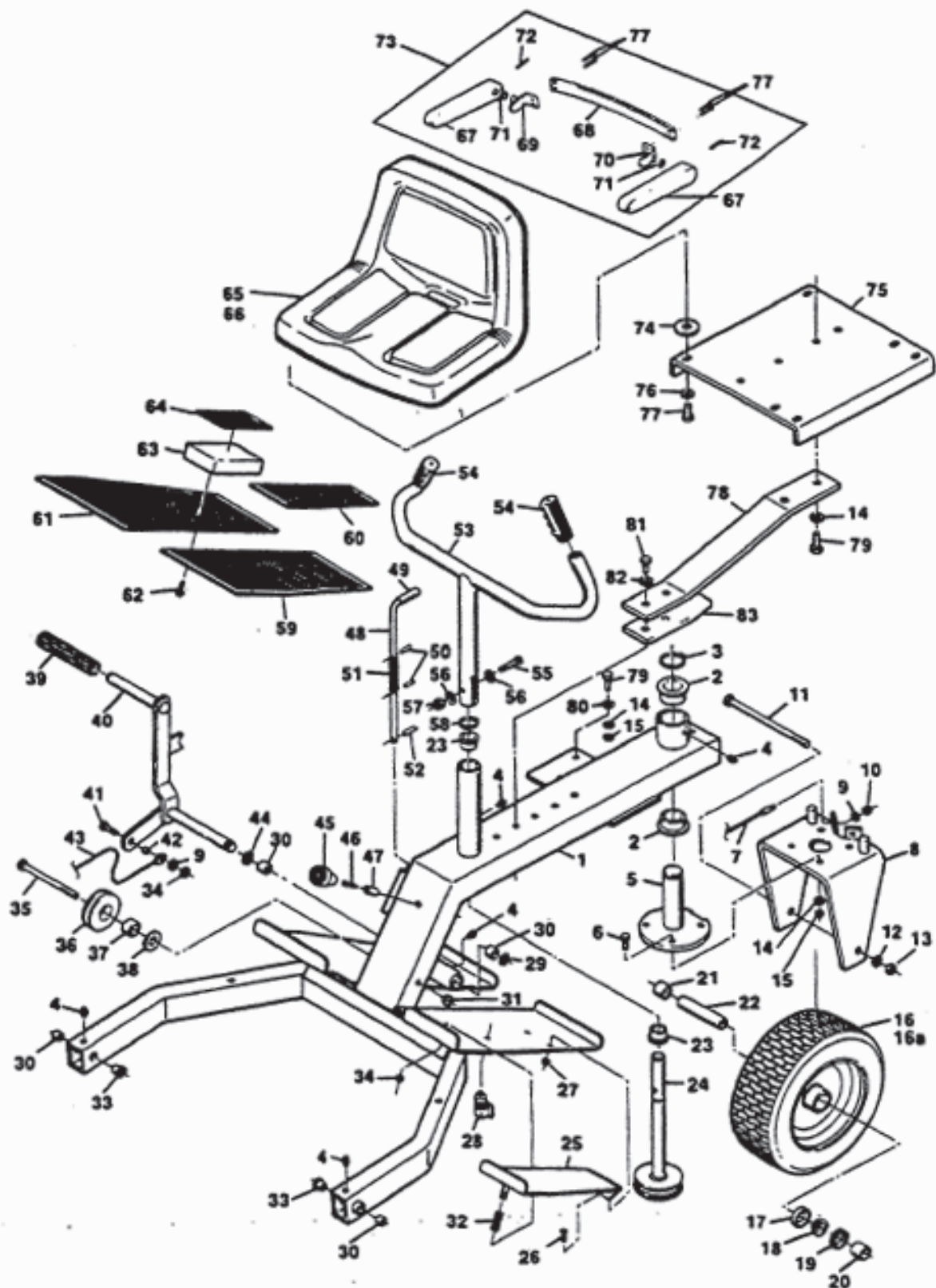


INSTRUMENT PANEL

Ref. No.	Part Number	Description
1	45025	Console Support
2	04062-01	Hair Pin Cotter, Large
3	43032	Swivel Joint
4	43030	Shift Connector Rod
5	"	Hex Head Bolt, 5/16-18 x 2-1/4"
6	48030-01	Clamp, Cable
7	"	Lockwasher, 5/16 Spring
8	"	Hex Lock Nut, 5/16-18
9	43017	Ballcrank Shaft
10	46142	Shifter Assembly (Includes 11 & 14)
11	48100-06	Bronze Bearing
12	04041-08	Washer, 49/64 x 1-1/4 x 16 ga.
13	04050-02	Retaining Ring, 3/4 Ext. "E"
14	48114-04	Grease Fitting, 1/4-28 Str
15	46143	Mower Engage (Includes 11, 14, 16)
16	48093	Grip, Mower Lever
17	48045	Winch Cable Assembly
18	04070-03	Eyebolt, 3/8-16 x 2"
19	"	Hex Nut, 3/8-16
20	"	Lockwasher, 3/8 Spring
21	"	Hex Head Bolt, 1/4-20 x 3/4"
22	42049	Instrument Panel
23	48091	Choke Control
24	48090	Throttle Control
25	48017	Starter Switch (Includes 26-28)
26	48017-02	Key, Ignition
27	48017-03	Lockwasher, Internal Tooth 5/8"
28	48017-04	Hex Nut, 5/8-11
29	"	Washer, 13/32 x 13/16 x 16 ga.
30	"	Hex Nut, 3/8-16 Elastic Stop
31	48050	Spring
32	"	Truss Head Screw, 1/4-20 x 3/4"
33	48023	Hour Meter
34	48022	Ammeter
35	"	Screw, Phillips Washer Hd, #10-32 x 1/2"
36	45122	Panel Cover Weldment
37	"	Lockwasher, Ext. Tooth #10
38	"	Hex Nut, #10-32
39	45023	Shifter Handle
40	48092	Shifter Knob
41	"	Hex Head Bolt, 3/8-16 x 2"
42	45024	Shift Quadrant Weldment
43	04041-10	Washer, 3/8 x 2 x 16 ga.
44	45023	Shifter Handle
45	48092	Shifter Knob
46	42413	Bracket, Fuse Holder
47	04031-01	Lockwasher, #10 External Tooth
48	04021-01	Hex Nut, Elastic Stop Lock #10-32
49	"	Screw, Phillips Head, #10-32 x 1-1/2"

* Common hardware which should be purchased locally. All bolts Grade 5 plated, all other fasteners zinc plate.

RIDER FRAME ASSEMBLY



RIDER FRAME ASSEMBLY

Ref. Part No.	Part Number	Description	Ref. Part No.	Part Number	Description
1	46057	Steering Frame	42	43049	Sleeve
2	48100-02	Bronze Bearing	43	48241	Foot Cable Assembly
3	04050-02	Retaining Ring, 1-1/8 Ext. Basic	44	*	Washer, 49/64 x 1-1/4 x 16 ga.
4	48114-01	Grease Fitting, 1/4-28 Str.	45	48097	Bumper Stop Cover
5	45008	Rear Wheel Pivot	46	*	Screw, Phillips Flat Head, 1/4-20 x 1-1/2"
6	*	Hex Head Bolt, 3/8-16 x 1-3/8"	47	43046	Bumper Stop
7	48828	Steering Cable	48	46141	Parking Brake Lever (Includes 49)
8	45035	Rear Wheel Yoke	49	48095	Grip
9	*	Lockwasher, 3/8 Int. Tooth	50	*	Rolling Pin, 5/32 x 3/4"
10	*	Hex Jam Nut, 3/8-24 UNF	51	48053	Spring
11	04001-40	Hex Head Bolt, 5/8-11 x 9"	52	*	Drive Lock Pin, 3/16 x 1-1/4"
12	*	Lockwasher, Spring, 5/8"	53	46029	Steering Handle (Includes 54)
13	*	Hex Nut, 5/8-11	54	48159	Grip
14	*	Lockwasher, Spring, 3/8"	55	*	Hex Head Bolt, 5/16-18 x 1-3/4"
15	*	Hex Nut, 3/8-16	56	*	Washer, 11/32 x 11/16 x 16 ga.
16	48005-01	Wheel Assy (Includes 16A-19)	57	*	Hex Elastic Stop Nut, 5/16-18
16A	48005-03	Rim Only	58	04050-03	Retaining Ring, 7/8 Ext. Basic
17	48005-04	Bearing Cup	59	48040	Pad - LH
18	48005-05	Bearing Cone	60	48041	Pad, Safety Pedal
19	48005-06	Grease Seal	61	48039	Pad - RH
20	43020-01	Spacer, Short	62	*	Hex Head Wood Screw #14 x 1"
21	43020-02	Spacer, Long	63	48036	Heel Rest
22	43021	Rear Wheel Sleeve	64	48037	Pad, Heel
23	48100-01	Bronze Bearing	65	48592	Seat Assembly (Includes 66-72,77)
24	45009	Steering Shaft	66	48592-01	Seat Only
25	45033	Safety Pedal	67	48014-03	Arm Rest
26	*	Flat Head Screw, #10-32 x 3/4 Slotted	68	48014-07	Back Strap
27	*	Hex Nut, #10-32 Elastic Stop	69	48014-04	Mounting Bracket - RH
28	48026	Foot Safety Switch	70	48014-05	Mounting Bracket - LH
29	04050-02	Retaining Ring, 3/4 Ext. "E"	71	48014-06	Wave Washer
30	48100-06	Bronze Bearing	72	*	Set Screw 3/8-16x3/4 Flat Point
31	*	Hex Nut, 1/2-13, Elastic Stop	73	48014-02	Arm Rest Kit (Includes 67-72,78)
32	48049	Spring, Foot Safety Switch	74	04041-11	Washer, 13/32 x 1-1/2 x 7 ga.
33	48100-03	Bronze Bearing	75	45210	Seat Plate
34	*	Hex Lock Nut, 1/4-20	76	*	Lockwasher, 5/16 Spring
35	04001-37	Hex Head Bolt, 1/2-13 x 5-1/2"	77	*	Hex Head Bolt, 5/16-18 x 3/4"
36	46140	Winch Cable Pulley (Includes 37)	78	42026	Seat Support Spring
37	48100-04	Bronze Bearing	79	*	Hex Head Bolt, 3/8-16 x 1"
38	*	Washer 1/2" (.531 x 1.052 x .095)	80	*	Washer, 13/32 x 13/16 x 16 ga.
39	48096	Sleeve, Foot Pedal	81	*	Hex Head Bolt, 7/16-14 x 1-1/2"
40	45115	Foot Pedal Weldment	82	*	Lockwasher, 7/16" Spring
41	*	Hex Head Bolt, 1/4-20 x 1"	83	42366	Reinforcement, Seat Spring

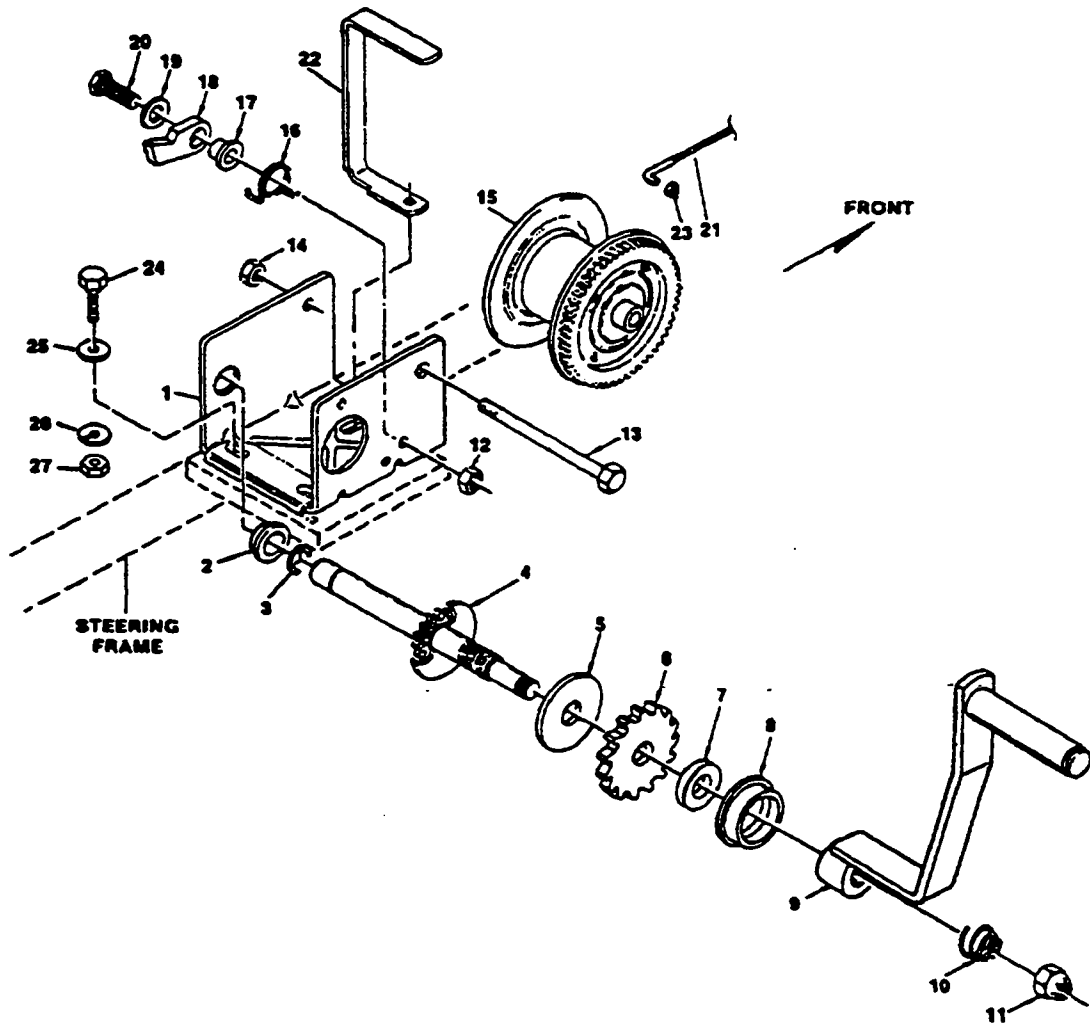
* Common hardware purchased locally. All bolts Grade 5 plated, all other fasteners zinc plate.

TRANSAXLE ASSEMBLY

PEERLESS 820-003B / SCAG 48310

Ref. Part No. Number	Description	Ref. Part No. Number	Description
1	770088 Case, Transaxle	48	784342 Rod & Fork Assembly, Shift
2	778253 Gear, Spur (15 Teeth)	49	776274 Shaft, Input
3	778199 Gear, Spur (15 Teeth)	50	776277 Shaft Brake
4	778200 Gear, Spur (20 Teeth)	51	790007 Plate, Brake Pad
5	778201 Gear, Spur (25 Teeth)	52	790006 Pad, Brake
6	778202 Gear, Spur (28 Teeth)	53	786026 Pin, Dowel
7	778203 Gear, Spur (22 Teeth)	54	782075 Locknut, 5/16-24
8	778204 Gear, Spur (25 Teeth)	55	792076 Washer, Flat
9	778205 Gear, Spur (30 Teeth)	56	790016 Lever, Brake
10	778206 Gear, Spur (35 Teeth)	57	792073 Screw, Hex Head Thrd.Frm. 1/4-20 x 1-1/4"
12	778246 Gear, Bevel (33 Teeth)	57A	792085 Screw, Hex Head Thrd.Frm. 1/4-20 x 2-1/4"
13	784216 Collar, Shift	58	790025 Holder, Brake Pad
14	786123 Sprocket (18 Teeth)	59	778197 Pinion, Differential Bevel
15	786082 Sprocket (9 Teeth)	59A	778198 Gear, Bevel
16	776276 Shaft, Counter	60	786019 Pin, Drive
17	778245 Bevel Pinion, Input	61	776027 Block, Drive
18	786121 Spacer, Neutral	62	774333 Carrier, Differential (Threaded Holes)
18A	786122 Spacer, Neutral	62A	774334 Carrier, Differential
19	776275 Shaft, Output (9 Teeth)	63	778248 Gear, Ring (31 Teeth)
20	778247 Gear, Output (35 Teeth)	64	780107 Washer,
21	790043 Disc, Brake	65	780042 Washer, Thrust
22	792123A Key	66	792018 Ring, Snap
23	780084 Bearing, Thrust	67	792020 Screw, Hex Hd., 1/4-20 x 2-1/4"
24	780051 Washer, Thrust	68	792006 Lockwasher, 1/4"
25	788040 Ring, Retaining	69	774796 Axle (12-1/4" Long)
26	780051 Washer, Thrust	70	774823 Axle (24-1/4" Long)
27	780071 Bearing, Thrust	71	782074 Plug, Hex Hd., 9/16-18
28	786081 Chain, Roller (No. 41 Chain, 24 Links)	72	786092 Spacer
29	780072 Washer, Thrust	73	786085 Bracket, Brake Lever
30	780155 Bearing, Needle	74	786071 Spacer
31	792077 Ball, Steel	75	786072 Spacer
32	780139 Washer, Thrust	76	780153 Washer
33	792078 Screw, Set, 3/8-16 x 3/8"	77	786144 Sleeve (Stepped)
34	792079 Spring	78	780150 Bearing, Needle
35	792073 Screw, Hex Head. Thrd. Frm. 1/4-20 x 1-1/4"	79	780152 Bearing, Needle (Capped)
35A	792129 Screw, Hex Head. Thrd. Frm. 5/16-18 x 1-1/4"	80	792001 "O" Ring
36	780108 Washer, Thrust	81	786142 Sleeve (Stepped)
37	780119 Bearing, Ball	82	788071 Ring, Square Cut
38	780128 Washer, Thrust	83	780168 Bearing, Needle (Capped)
39	780050 Bearing, Ball	84	786143 Sleeve (Stepped)
40	780165 Washer, Flat	85	780151 Bearing, Needle (Capped)
41	788077 "O" Ring	86	786145 Sleeve (Stepped)
42	788042 Seal, Oil	87	788070 Ring, Square Cut
43	780166 Washer, Cupped	88	780031 Bearing, Needle
44	786131 Cap, Bearing		788067 Gear Grease, Bentonite
47	772097A Cover, Transaxle		

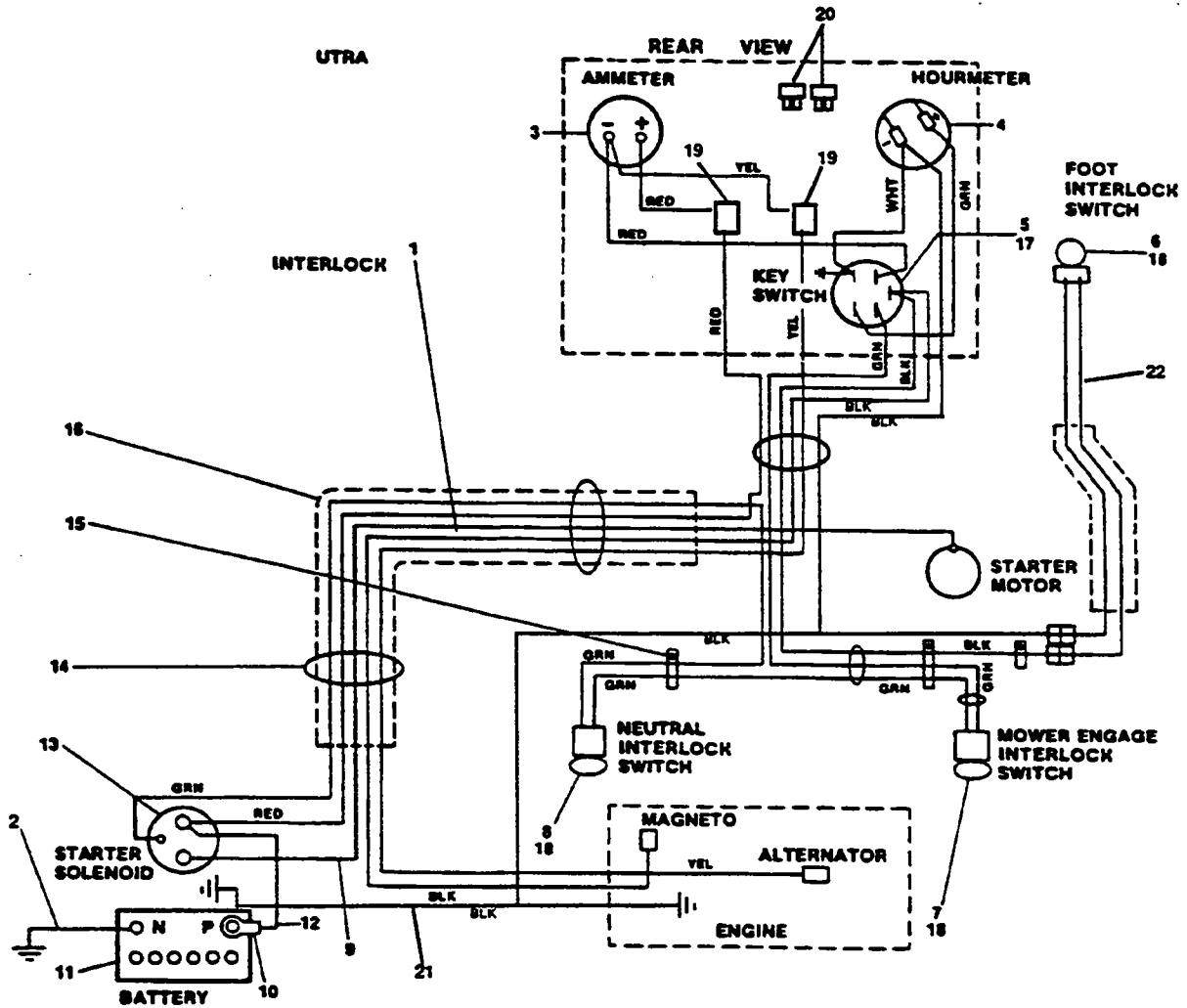
WINCH LIFT SYSTEM



WINCH LIFT SYSTEM

Ref. No.	Part Number	Description	Ref. No.	Part Number	Description
1	48043	Winch Assembly (incl.1-8,10-20)	13	205008	Reel Shaft
2	204009	Shaft Bushing	14	205155	Lock Nut, 7/16-14
3	205116	E-Ring	15	304227	Winch Reel
4	304228	Drive Shaft	16	204363	Ratchet Spring
5	204362	Pressure Plate	17	404166	Ratchet Spacer
6	404164	Ratchet Wheel	18	404409	Ratchet Pawl
7	404163	Pressure Washer	19	205024	Flat Washer
8	204359	Shaft Bushing	20	205167	Ratchet Bolt
9	48044	Winch Handle	21	48045	Winch Cable Assembly
10	204364	Handle Spring	22	42127	Cable Guide
11	205015	Handle Nut	23	04021-03	Hex Lock Nut, 1/4-28
12	205011	Hex Locknut, 3/8-16			

ELECTRICAL SYSTEM ST-18KH



Ref. Part No.	Part Number	Description	Ref. Part No.	Part Number	Description
1	48259	Wiring Harness, Complete	12	48029-03	Battery Cable, 13-3/4" Red
2	48029-10	Battery Cable, 20" Black	13	48016	Starter Solenoid
3	48022	Ammeter	14	48028	Cable Tie
4	48023	Hour Meter	15	48030	Cable Clamp
5	48017	Key Switch	16	48033	Plastic Conduit
6	48026	Foot Interlock Switch	17	48018	Connector, Starter Switch
7	48019	Mower Engagement Interlock Switch	18	48020	Connector, Interlock Switch
8	48021	Neutral Interlock Switch	19	48892	Wire Assembly w/Fuse
9	48029-02	Battery Cable, 31-1/2" Red	20	48298	Fuses, 20 Amp Blade Type
10	48126	Rubber Boot	21	48868	Wire Assembly Ground
11	48015	Battery	22	48616	Wire, Foot Switch

REPLACEMENT DECALS



48072
Decal - Heavy Duty Commercial



48314
Decal - Scag Logo

CAUTION
YOU MUST USE CLUTCH
WHEN SHIFTING TO AVOID
GEAR DAMAGE

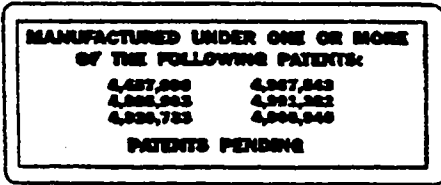
48147
Decal - Declutch



48320
Decal - 61



48825
Decal - Scag Logo



48182
Decal - Patent



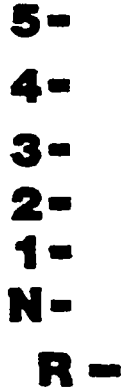
48071
Decal - OPEI Safety



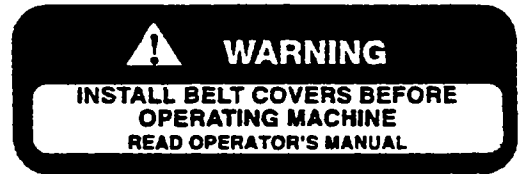
48079
Decal - Key Switch



48076
Decal - Throttle



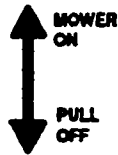
48074
Decal - Shifter Index



48712
Decal - Install Belt Cover



48073
Decal - Danger Rotating Blades



48078
Decal - Mower Engage

IMPORTANT

- ALWAYS TRANSPORT WITH CUTTER DECK DOWN AND LIFT CABLE SLACK
- MOW WITH WINCH CABLE SLACK TWO FULL TURNS
- FOR SMOOTH TURNS DEPRESS FOOT CLUTCH PEDAL SLIGHTLY

48048
Decal - Transport Down



48404
Decal - Made in USA