

INSTRUCTIONS FOR OPERATING YOUR GIANT-VAC
MODELS 159 - 159-B

POWER UNIT:

As you unpack your Giant-Vac power unit, you will find the following parts:

- 1 - Power unit with motor, impeller and wheels, gear box with drive belts.
- 1 - Set of handles.
- 1 - Package of nuts, bolts and washers.
- 1 - Discharge elbow and dust control bag.

VACUUM UNIT: The vacuum unit, separately packaged - contains the nose cone with two caster wheels.

CAUTION
ROTATING PARTS

BEFORE MAKING ANY ADJUSTMENTS OR REPAIRS.
STOP ENGINE AND REMOVE SPARK PLUG WIRE.
WHILE IN OPERATION KEEP ALL PARTS OF BODY
AWAY FROM INTAKE AND EXHAUST SECTIONS.

Inspect parts for any damage that might have occurred during transit. If any is found, save the packing box and immediately notify the transport carrier who delivered your machine as he is responsible for the damage and is the only one to make any adjustments. Before leaving our plant, all components were completely inspected. All manufacturing dimensions are held to close tolerances, and thus, you will have little difficulty in assembling your Giant-Vac if you follow these instructions.

MOTOR INSTRUCTIONS: You have received a complete engine manual with your machine. Be sure to note instructions on OILING. FILL OUT THE WARRANTY CARD IMMEDIATELY and send it to the engine manufacturer, as directed, as they are responsible for the operation of the engine and will service it. If you have any difficulties with the engine, it is best to contact the engine manufacturer rather than us, as much time will be saved.

HANDLE AND THROTTLE CONNECTIONS: The handles are made in three parts. Insert the bottom sections into the top "U" shaped section. Secure these by means of the two 5/16 x 1 1/2" round headed bolts. Be certain to have the head of the bolts on the inside of the handles to prevent the nut from rubbing on the bag. You will note the lower section of the handle has an additional tube inserted in the lower section. This gives additional rigidity. Next, bolt the handles to the side of the engine deck. Level the handle and then tighten the bottom nuts to hold the handles in place. Because of the double tubular handles, these can be tightened quite firmly without fear of collapsing the tubing. This quick assembly feature is rugged and also makes disassembly of the handles for storage purposes fast and simple. Secure the throttle lever to the outside of the handle by means of two 3/16 x 1 3/4" bolts, lockwashers and nuts. Be certain the head of the bolt is on the inside of the handle in order that the threaded end does not cut the bag. Fasten the cable to the handles by means of the cable clip supplied. Be sure to leave a generous loop in the throttle cable where it fastens to the engine as a sharp kink will affect the ease in working the throttle. Next, fasten the exhaust elbow to the power head by means of the 5/16 x 3/4" bolt and lockwasher. The nose cone slides on the front section of the blower and is held by means of a 3/8" x 5/8" T-bolt and lockwasher.

Next, connect the drive cable from the belt type clutch to the control lever on upper handle, then fasten the cable to the handles by means of the cable clip supplied.

DUST CONTROL BAG: The bag is held in place over the exhaust nozzle by means of a draw string. Loops at the opposite end fit over the handle bar. This is a large capacity bag designed to keep dust to a minimum. This allows the bag to be filled completely. It should be cleaned periodically. One way to clean the bag thoroughly is to leave the zipper open and run the engine for a few minutes while shaking the bag vigorously. Turning the bag inside out and sweeping it briskly with a stiff broom is sometimes desirable when the bag is extremely dirty. To avoid injury, see below:

DO NOT STAND BEHIND THE OPENING WITH THE ZIPPER OPEN WHILE THE ENGINE IS RUNNING.

The bag must be kept clean for efficient operation of your Giant-Vac. Four bags can be cleaned in a coin machine, IMPORTANT - Never wash a bag as the pores will shrink. A bag must be porous as many thousands of cubic feet of air per minute escape through the pores of the bag. If the pores become plugged, the operational efficiency of your machine will be greatly reduced. The bag should always be emptied when a job is completed. Debris should never be left in the bag when machine is not in use.

OPERATING ADJUSTMENTS: The vacuum unit or nose cone is adjusted for height by turning the caster assembly at the front of the nose cone and tightening the thumb nut after the desired height has been set. In general, if your Giant-Vac is being used on an even surface, a 5/8" clearance for the nose cone is desirable. For turf application, it would depend upon the height of the grass. This unit has a unique forward control lever on the right side of the upper handle.

BLOWING ATTACHMENT: The blowing attachment comes in a separate package and is available as an extra. It contains the exhaust blowing nozzle and the front baffle plate. These are fastened to the power unit with the bolts supplied with the power unit assembly. When using the blowing unit, it is important to install the front baffle plate to shield the high speed impeller. Remember that high speed moving parts should be treated with care. We have installed safeguards. BE SURE TO USE THEM. Changing the speed of the engine, changes the force of your exhaust. By using this method, you can move litter into a neat row at a very rapid rate. In operation, it is best to bear down on the handles so that the front assembly is raised slightly off the ground.

HOSE ATTACHMENT: A hose attachment kit is available as an additional attachment. This package contains an intake flange which connects to the front of the blower housing, a 10 foot length of hose and clamps. The hose is secured to the intake flange by means of a second clamp. This attachment is ideal for such uses as cleaning inside cars, leaves from around bushes, beddings and trees. It will accomplish countless other chores.

WARRANTY: Within 90 days from the purchase date, GIANT-VAC MFG. INCORPORATED will replace free of charge for the original purchaser, any part or parts returned to the factory at South Windham, Connecticut and found by us to be defective in material or workmanship.

Bags are made from specially woven long fibre material. They are carefully inspected before shipment. Bags, however, are an expendable item and therefore, cannot be guaranteed.

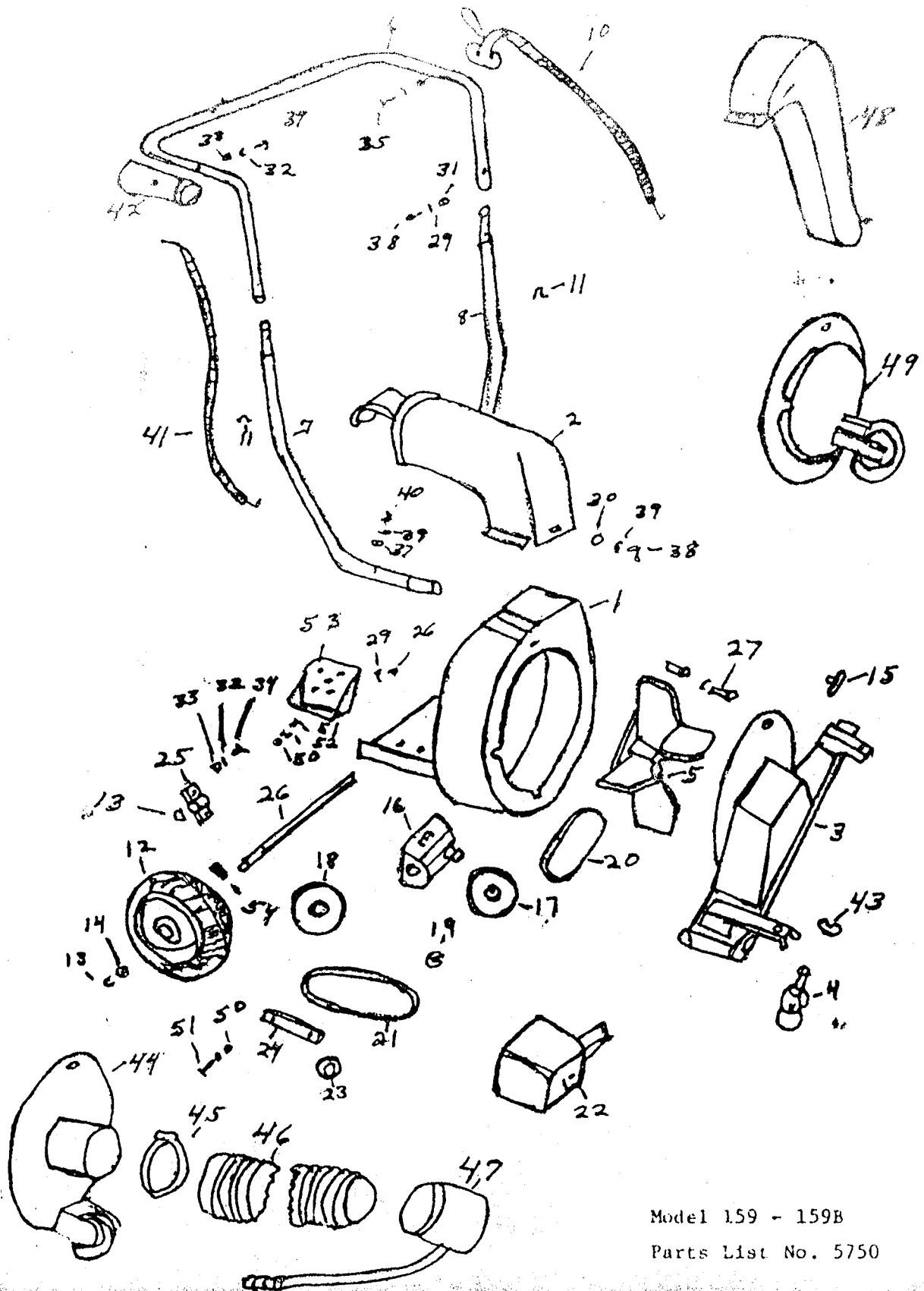
APRIL 25, 1985

PARTS LIST NO. 5750

REF. NO.	PART NO.	DESCRIPTION	159	159B
1	10066	Blower housing and engine base	1	1
2	24504	Exhaust elbow	1	1
3	27112	Nose cone	1	1
4	33014	4" Caster wheel	2	2
5	21528	Impeller	1	1
6	23050	Upper handle	1	1
7	23034	Lower handle right side	1	1
8	23035	Lower handle left side	1	1
9	23051	Handle brace	1	1
10	35002	Throttle cable 50"	1	1
11	31007	Throttle clip	1	1
12	33077	Wheel 10.25 x 250 semi-pneu.	2	2
13	31194	Retaining rings	4	4
14	31041	Flat washers	2	2
15	31026	T-bolt nose cone to blower	1	1
16	36074	Gear box	1	1
17	36075	Pulley 7" x 5/8"	1	1
18	36076	Pulley 7" x 3/4"	1	1
19	36077	Pulley 1 1/2" x 5/8"	1	1
20	36078	Drive belt	1	1
21	36079	Idler belt	1	1
22	37076	Gear box guard	1	1
23	36080	Idler	1	1
24	36081	Idler arm	1	1
25	31073	Pillow blocks	2	2
26	33078	Axle	1	1
27	31018	Impeller bolt 5/16" x 24 x 1/2" with key & Lockwasher	1	1
28	31016	Bolt 5/16" x 5/8"	1	1
29	31003	Lockwasher 5/16"	10	10
30	31027	Flat Washer 5/16"	1	1
31	31028	Acorn nut 5/16"	2	2
32	31013	Lock washer 1/4"	5	5
33	31030	Nut 1/4"	5	5
34	31044	Bolt 1/4 x 1"	4	4
35	31010	Bolt 10-24 x 1 1/4" w/lockwasher & nut	2	2
36	31031	Bolt 5/16 x 3/4"	1	1
37	31004	Nuts 5/16"	8	8
38	31029	Bolt screw head 5/16" x 1 1/4"	2	2
39	31195	Bolt 1/4" x 1 1/4"	1	1
40	31006	Bolt 5/16" x 1 1/2"	8	8
41	35005	Drive cable	1	1
42	23052	Forward control lever	1	1
43	31038	Thumb nut 3/4"	2	2
44	20174	Intake flange 4"	1	1
44	20175	Intake flange 5"	1	1
44	20176	Intake flange 6"	1	1
45	34011	Clamps 4"	2	2
45	34012	Clamps 5"	2	2
45	34013	Clamps 6"	2	2

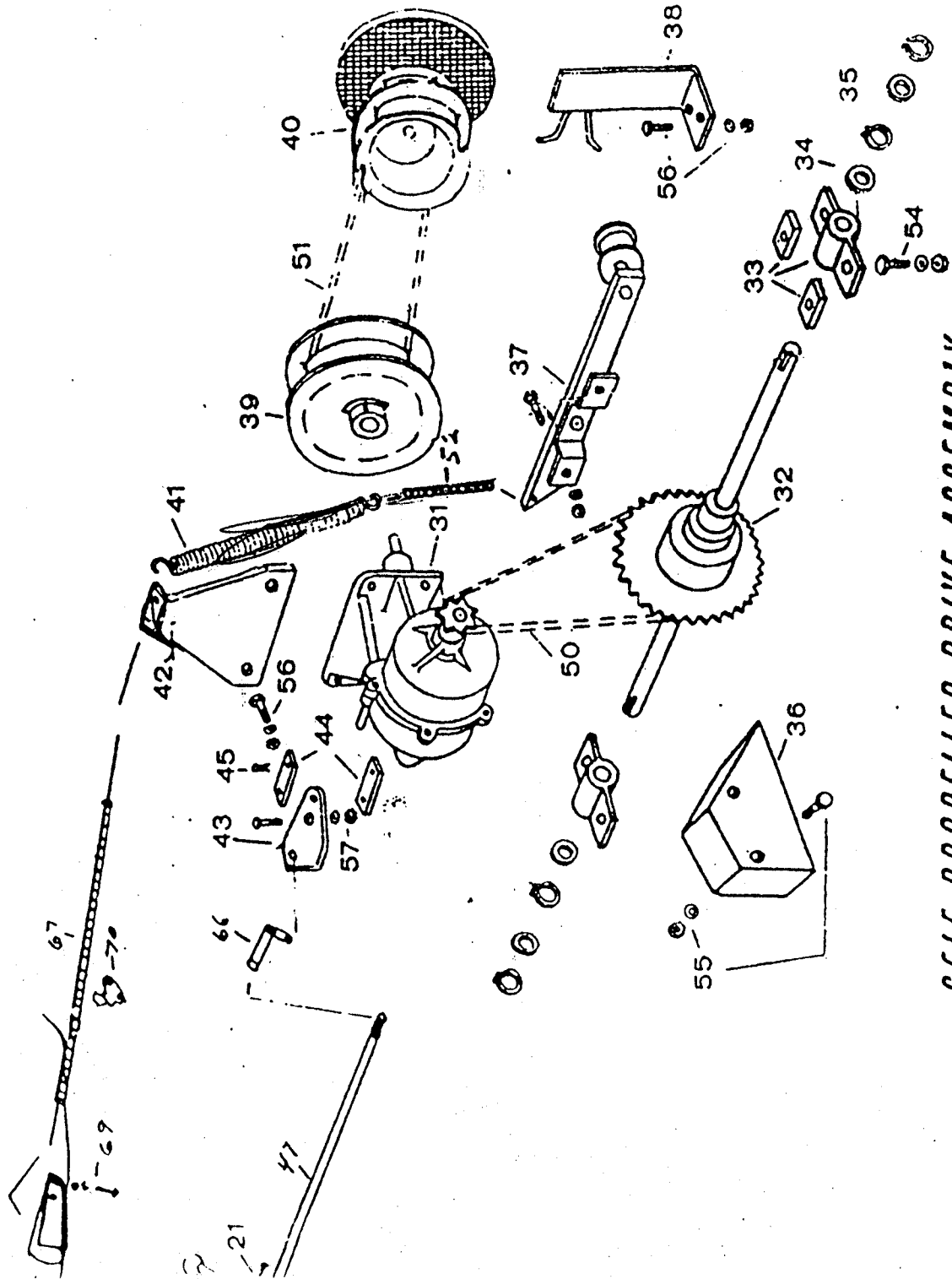
REF. NO.	PART NO.	DESCRIPTION	159	159B
46	34002	Hose 4" x 10'	1	1
46	34003	Hose 5" x 10'	1	1
46	34004	Hose 6" x 10'	1	1
47	20145	Intake nozzle 4"	1	1
47	20146	Intake nozzle 5"	1	1
47	20147	Intake nozzle 6"	1	1
48	24568	Blower air chute	1	1
49	24569	Blower intake baffle	1	1
50	31009	Nut 3/8"	4	4
51	31082	Bolt screw head 3/8" x 1"	3	3
52	31008	Lockwasher 3/8"	2	2
53	27113	Gear box holder	1	1
54	31196	Wheel pawl	2	2
	111	Dust control bag	1	1
	39001	5HP B&S Engine	1	1

APRIL 25, 1985



Model 159 - 159B
 Parts List No. 5750

MODELS 1680-B and 1780-K



SELF PROPELLED DRIVE ASSEMBLY